



# FOOT PEG INSTALLATION INSTRUCTIONS

## TOOLS NEEDED

- T-50 Torx Socket (JK)
- 13mm Socket (Other model wranglers)

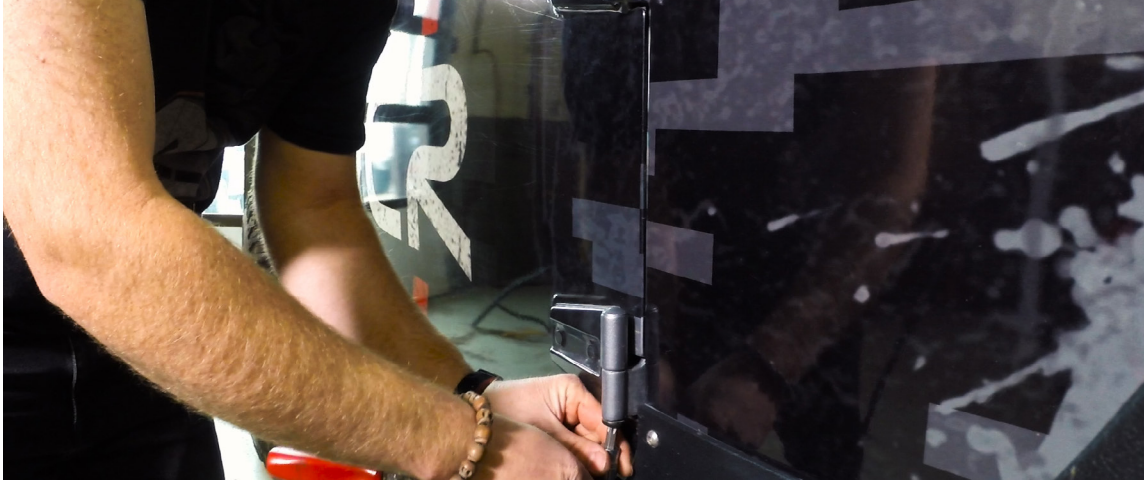
## OPTIONAL TOOLS

## HARDWARE

**Please read the mounting instructions below carefully before attempting to install.**

Thank you for purchasing your foot pegs from JcR Offroad!  
Checkout our website, [www.jcroffroad.com](http://www.jcroffroad.com) for other great off-road products. Be sure to rate and review our product online. If you have any questions or are missing parts, please don't hesitate to call us at 269-353-1184!

- 1** First remove the bolt (or nut) from the bottom of each hinge. On a JK it will be a T-50 torx bolt and on other model Wranglers it should be a 13mm nut. On older Wranglers be sure to spray the nut with penetrating oil. It is not uncommon for them to break off while trying to remove them. If one of them does happen to break, it's no big deal; you will still be able to remove your door.



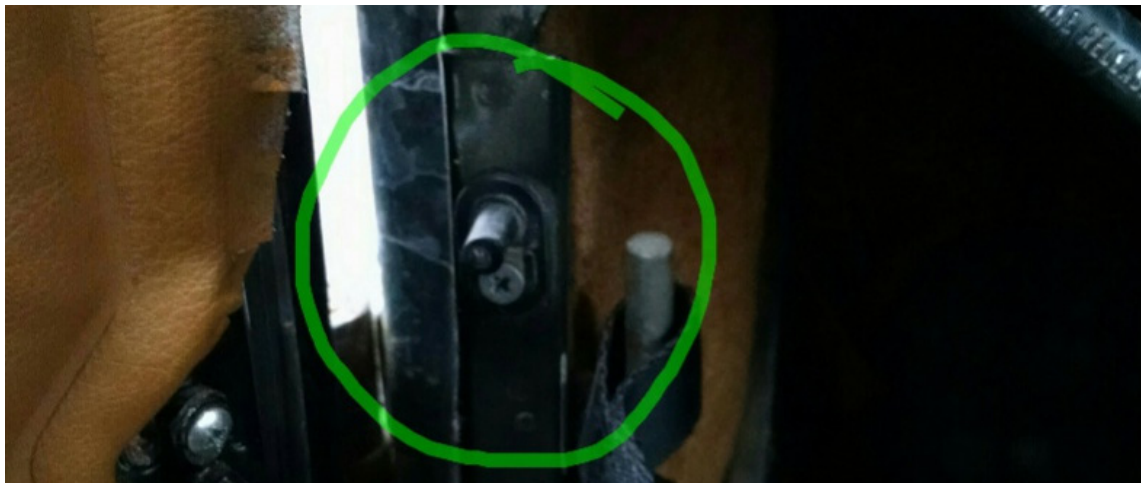
- 2** The next step will be to disconnect the wiring and remove the door stop.



**3** If you have a TJ, you will need to remove fuse 4 in order to turn off the dome lights after removing the doors.

17	13	9	5	1
CIGAR LIGHTER (20A) 18	RADIO (10A) 14	CLUSTER (10A) 10	REAR WIPE (20A) 6	STOP LPS (20A) 2
SPARE FUSE (20A) 19	HBL SW (10A) 15	SOLENOIDS DRL (10A) 11	BACK-UP LP ABS (10A) 7	SUB-WOOFER SYSTEM (20A) 3
SPARE FUSE (10A) 20	HEADLAMP AIM SW (10A) 16	PDC RELAYS SKIM (10A) 12	HEVAC (BLOWER FAN) (10A) 8	DOOR SW DEFEAT (10A) 4

If you have a YJ, you will need to unplug this switch in the door jam.



- 4** Now you can remove the door. We recommend rolling down the window so you can hold the top and bottom of the door while lifting it off the hinges. You may need to spray the hinges with penetrating oil prior to removing the door. It is helpful to rock the door back and forth while lifting.



- 5** The final step is the easiest. Simply place the long post on the foot peg into the bottom hinge.



- 6** Go enjoy those foot pegs!

# JKP-PC - JEEP FOOT PEGS - JK WRANGLER (07-16)

## Item Code Legend

EX: JKP-PC



Foot Pegs Left and Right

**Bolt Pack:**  
NONE

**Boxes:**  
• 9 X 6 X 4

**Packed By**

---

**Checked By**

---

# SWBP-PC - JEEP FOOT PEGS - WRANGLER TJ/LJ/YJ/CJ7 (76-06)

## Item Code Legend

EX: SWBP-PC



Foot Pegs Left and Right



Rubber Stop X2

**Bolt Pack:**  
NONE

**Boxes:**  
• 9 X 6 X 4

**Packed By**

---

**Checked By**

---