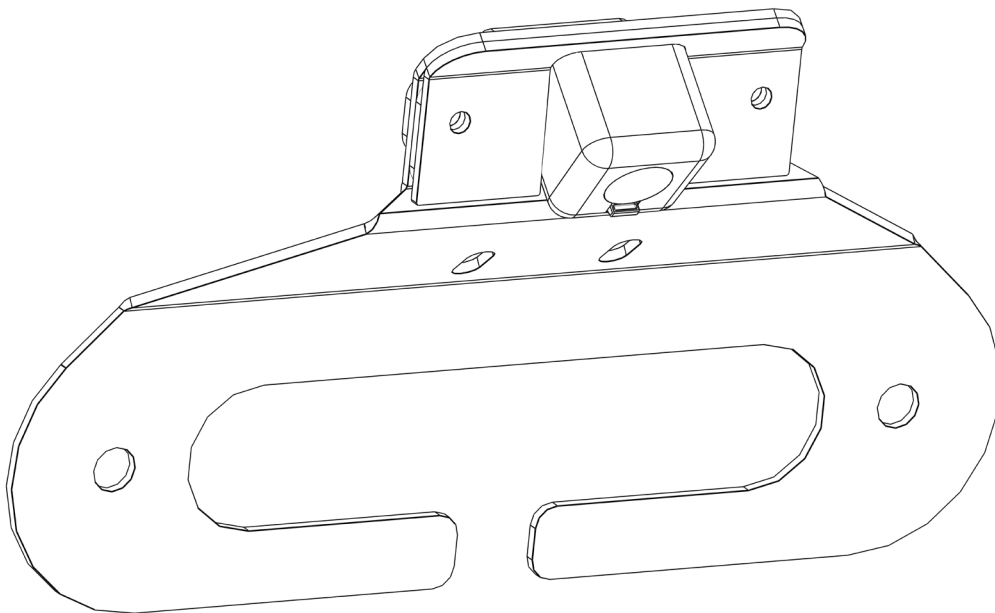




6TH GEN BRONCO FRONT CAMERA BRACKET

INSTALL INSTRUCTIONS



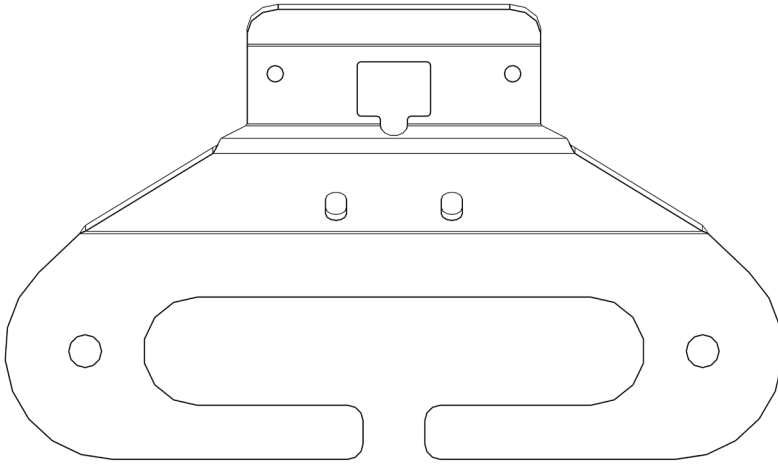
Please read the mounting instructions below carefully before attempting to install.

Check out the install video on the product page, if available for more information.

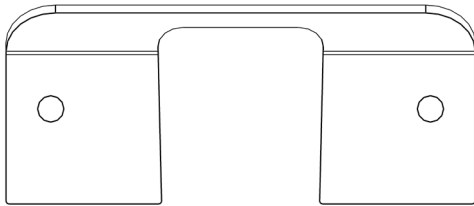
Thank you for purchasing from JcROffroad! Checkout our website, www.jcroffroad.com for other great off-road products. Be sure to rate and review our product online. If you have any questions or are missing parts, please don't hesitate to call us at 269-353-1184!

INCLUDED PARTS

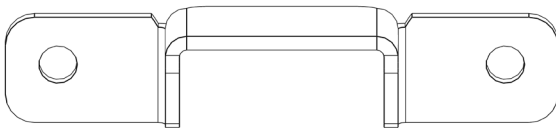
1x



1x

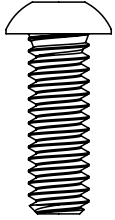


1x



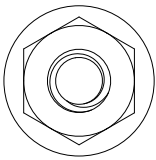
INCLUDED HARDWARE

2x



1/4"-20 x 3/4"
Button Head

2x



1/4"-20
Flange Nut

1x

Vacuum Tube
Extension

1x

Camera Extension
Cable (Teal)

DISASSEMBLY

1. Start by opening the hood, and removing the (4) factory clips holding down the top trim piece using a flat head screw driver or a plastic pry tool. Once the clips are removed, pull up on the trim piece to remove it.



2. Next, behind the top grille remove the (4) factory mounting screws using a 10mm socket, as shown below.



DISASSEMBLY

3. With the screws now removed, make sure to disconnect the coax cable for the front camera and the nozzle for the sprayer hose before removing the grille assembly.

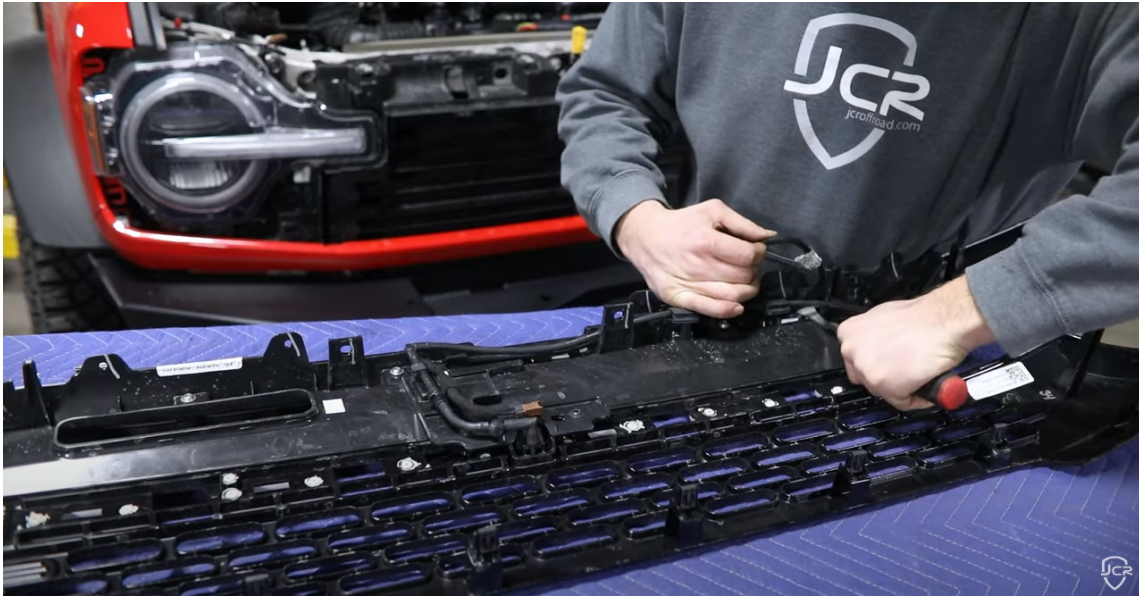


4. You can now make your way around the grille and carefully start to pull out on the assembly to break free all of the clips holding it together.



DISASSEMBLY

5. With the grille removed, remove all the clips holding the hose down, working from the outside to the center using a pry tool or flat head screw driver.



6. Take a T30 torx and remove the (3) mounting bolts holding the camera assembly to the grille.



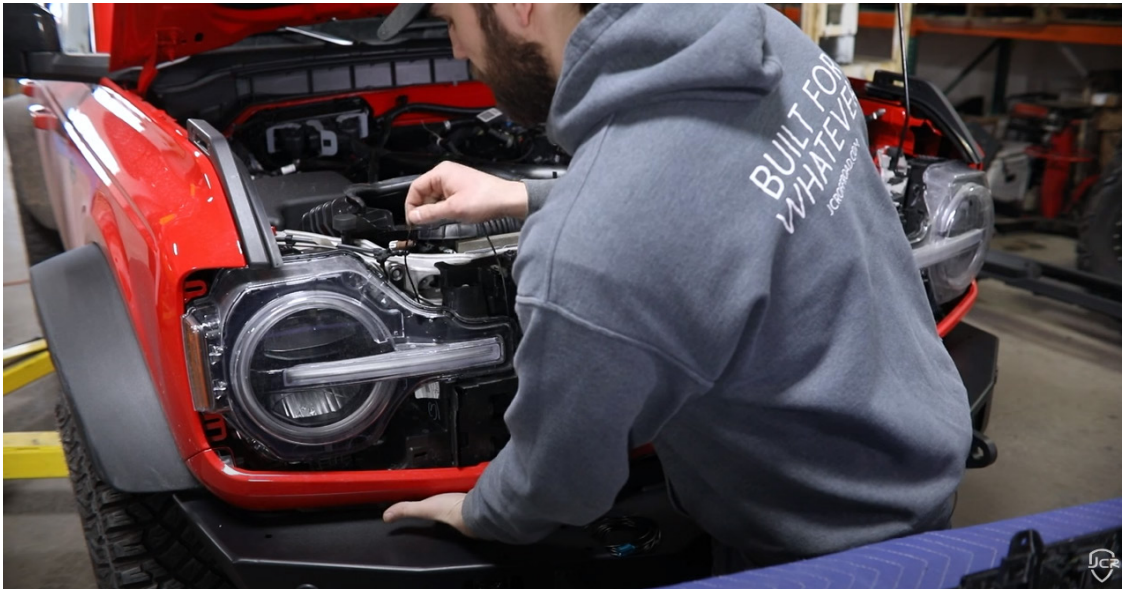
DISASSEMBLY

7. Once all (3) bolts are removed, you can remove the whole camera assembly and pop off the cover to the camera and remove the whole assembly from the bracket.



ASSEMBLY

8. Before you reinstall the grille, you will need to route your provided cable extension down behind the headlight and out through the bottom in between the bumper, as shown below. With the cable now fed through, plug in the end and feed the excess cable down through the grille.



ASSEMBLY

- 9a.** Next you're gonna replace the factory length of hose with the provided longer hose to route to the bumper. To do this, start by disconnecting the camera from hose so now you still have the male and female ends.



- 9b.** Take a sharp knife or razor and very lightly cut each end of the hose at the back edge of the connections, which should allow you to pull the fittings free from both ends, which you will need to attach to the longer provided hose.



ASSEMBLY

- 9c.** Now you're simply just going to attach each of the barbed fittings you removed from the factory hose to the provided new longer extension hose, as shown below. **Note: if you have having difficulty installing your barbed fittings into the new hose, you can apply heat to the ends of the supplied hose to ease installation. We recommend using a heat gun, but a simple lighter will suffice. Be careful to not overheat and melt the tubing.**



- 10.** With the fittings now attached to each end of the hose, take the camera and connect it back to the male connector on the hose as shown below. You can now route and connect the opposite end back into the body from under the grille, leaving the camera end exposed to use on the bumper.



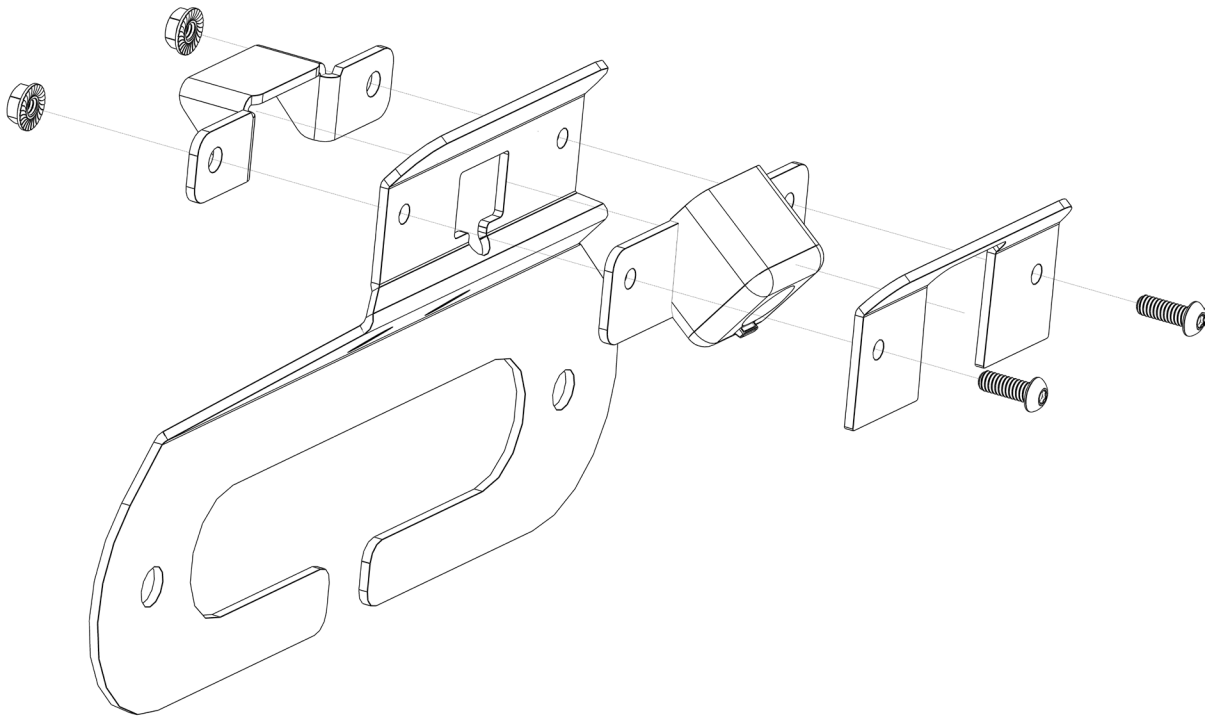
ASSEMBLY

- 11.** With all of your cables routed and out of the way, you can now reinstall your grille and top cover panel back on the front of your vehicle the same way you took it off. Making sure to connect all your clips and install all the screws to the correct location.



- 12.** Take your camera with the front cover and mount it to the provided camera relocation bracket with the camera and the flanges on the bracket facing out. Then place the front clamp plate on top of the camera, and the smaller flange bracket on the back with the flange facing out, as shown in the orientation below using the provided 1/4" button heads and nuts.

ASSEMBLY



- 13.** With your camera relocation bracket fully assembled, you can now install it onto your bumper. If you have a fairlead, now is the time to install that on top of the bracket as well so that it clamps over, using the provided holes as shown below.



ASSEMBLY

14. Once your bracket is in place on your bumper with the fairlead, you will just need to plug your camera back in and finish routing your cable extension along with your sprayer hose and tuck them away to your liking. Now is also the time to throw on whatever hook you may be using with your winch to complete your install.

