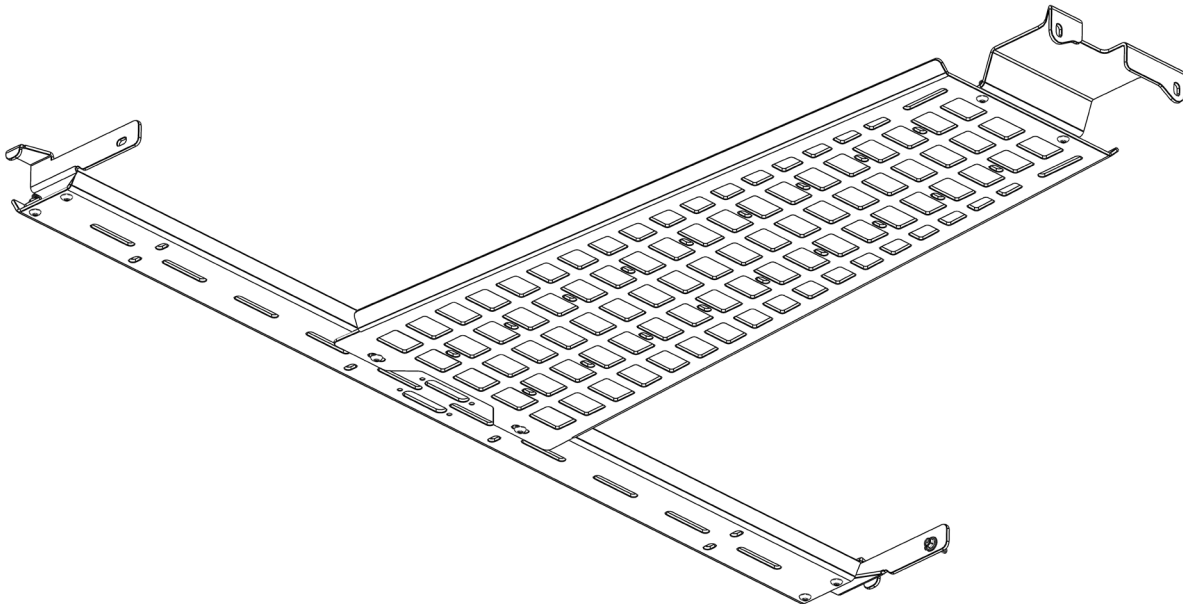




6TH GEN BRONCO OVERHEAD MOLLE PANEL

INSTALL INSTRUCTIONS



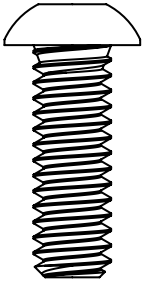
Please read the mounting instructions below carefully before attempting to install.

Be sure to check out the install video on the product page, if available.

Thank you for purchasing from JcROffroad! Checkout our website, www.jcroffroad.com for other great off-road products. Be sure to rate and review our product online. If you have any questions or are missing parts, please don't hesitate to call us at 269-353-1184!

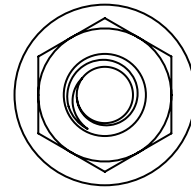
INCLUDED HARDWARE

8x



1/4"-20 X 3/4"
Button Head

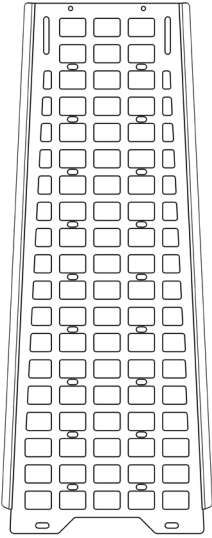
8x



1/4"-20
Flange Nut

INCLUDED PARTS

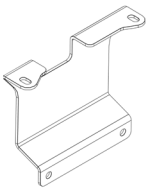
1x



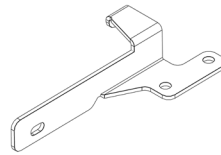
1x



1x

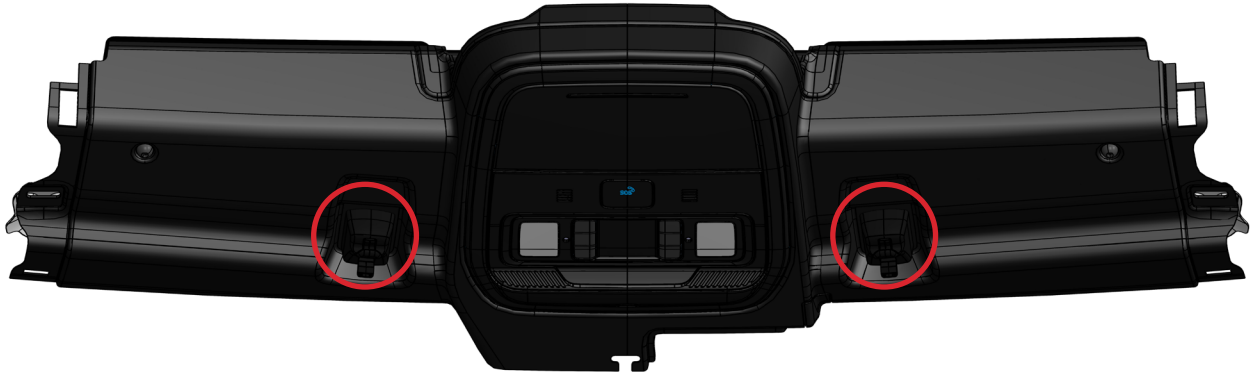


1L/1R

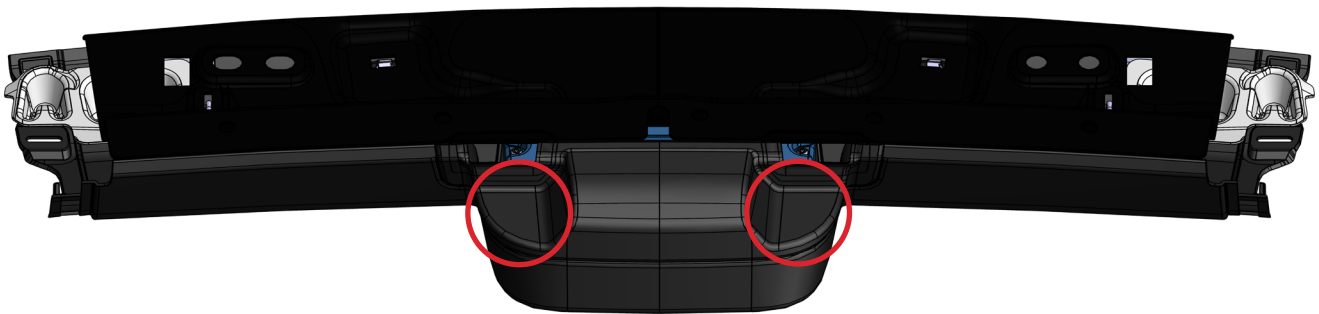


ASSEMBLY

- 1** Before starting the installation, you will need to do some disassembly in your vehicle. Start by removing the sun visor catches which are held in place by one bolt in the inside of each. This requires a T20 torx bit.

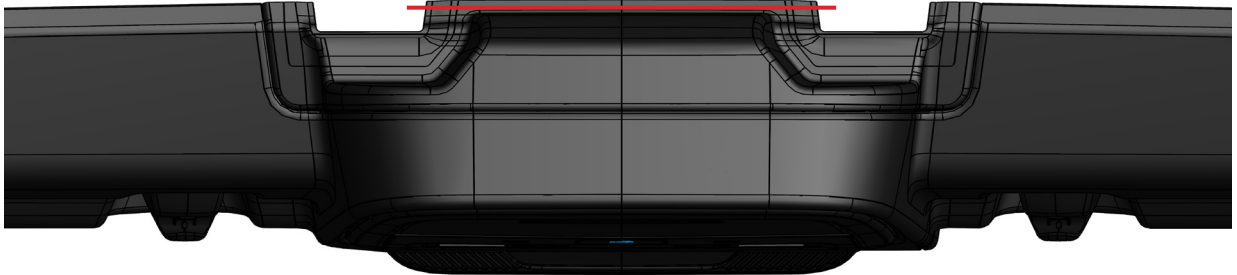


- 2** Next, gently but firmly apply downward pressure on the top of the overhead console in order to pull it out of its clips (circled below). Once it is hanging down you will have room to access the area behind it.



ASSEMBLY

- 3** For the overhead console to be able to snap back into place later, you will need to trim roughly 1/4" from the top edge of the plastic. Simply cut a straight line across, just above the bend radius as shown below.

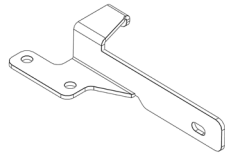


- 4** With everything out of the way, you will be able to see the bolts holding the roof latches in place. Remove the inner two bolts using a T50 torx bit and install the front mounting bracket into those holes using the factory hardware. The bracket should be oriented so that the cutout is on the top and to the right of center. Before tightening it into place, push it all the way up so it is tight to the metal on the windshield frame.

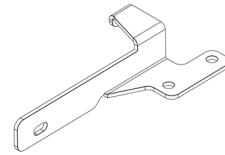


ASSEMBLY

- 5** Next, loosely install the side mounting brackets. The hooked side of each slides into the slots in the top of the roll bar just behind the front seats. It can then be bolted into the factory threaded hole that lines up with the hole in the bracket using the hardware that is already there. To remove these bolts you will need an 8mm socket. Each side mount should be oriented so that the hook is in the slot and the slotted flange is towards the front of the vehicle.

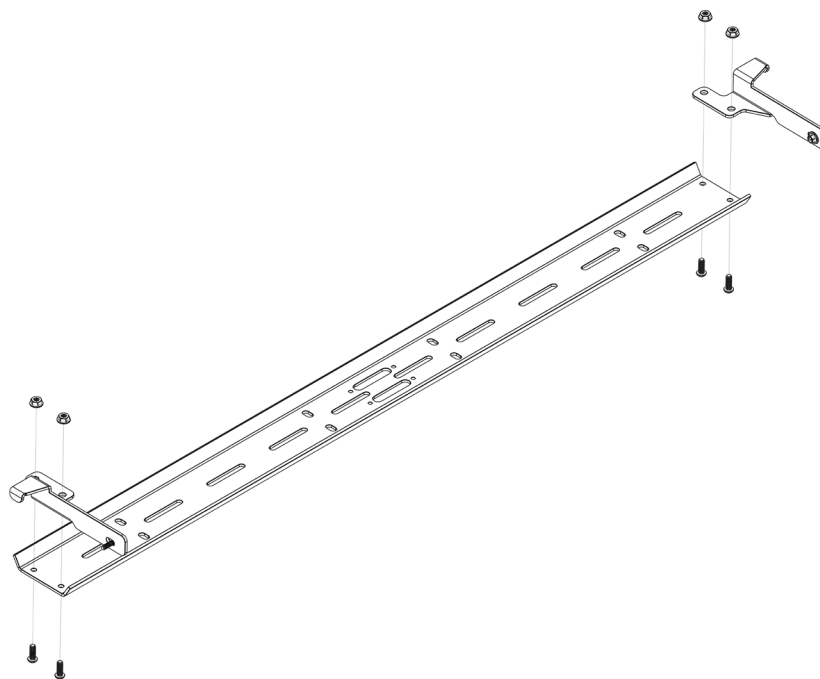


DRIVER



PASSENGER

- 6** With both side mounts loosely in place, mount the cross bar between them, from the bottom, using the provided 1/4"-20 bolts and serr. flange nuts.



ASSEMBLY

- 7 Once everything is in place, mount the MOLLE panel to the bottom of the cross bar and front mounting bracket using the same 1/4"-20 hardware. The narrower end of the panel is the front, and the sides should be pointing up. Finally, go back and tighten all the bolts down fully and reassemble the overhead console in the reverse order of how you took it apart.

