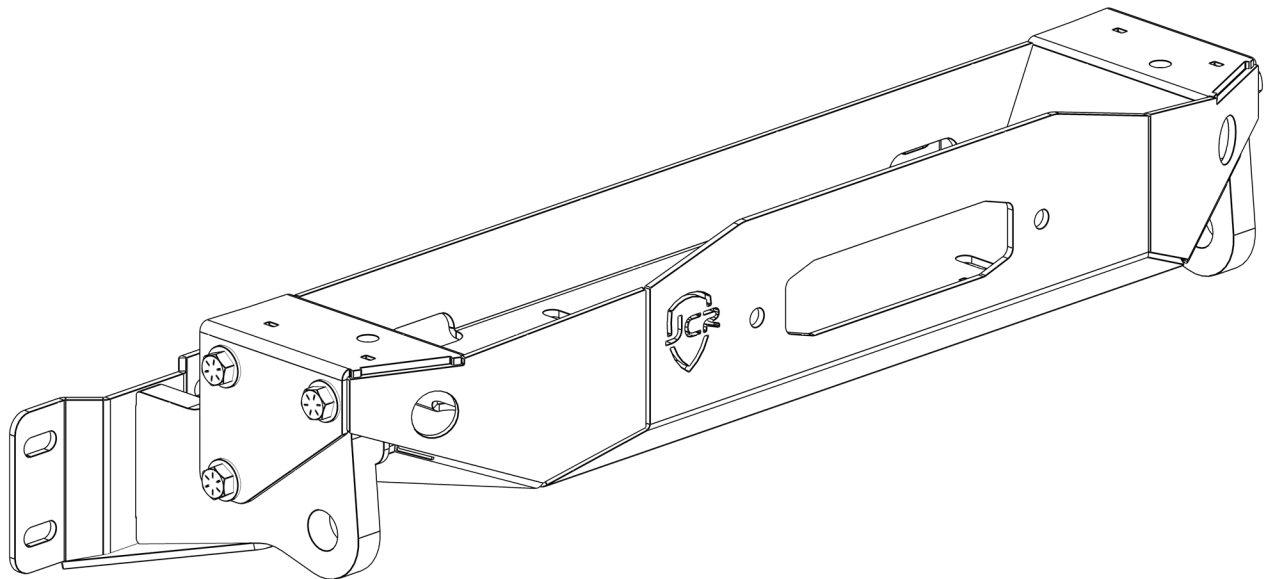




# 6TH GEN BRONCO WINCH PLATE

## INSTALL INSTRUCTIONS



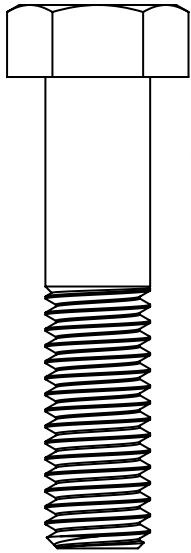
**Please read the mounting instructions below carefully before attempting to install.**

**Be sure to check out the install video on the product page, if available.**

Thank you for purchasing from JcR Offroad! Checkout our website, [www.jcroffroad.com](http://www.jcroffroad.com) for other great off-road products. Be sure to rate and review our product online. If you have any questions or are missing parts, please don't hesitate to call us at 269-353-1184!

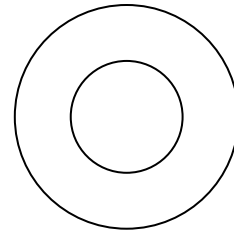
# INCLUDED HARDWARE

6x



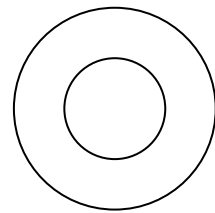
1/2"-13 X 2-1/4"  
Hex Head

12x



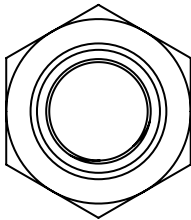
1/2"  
Washer

6x



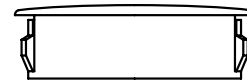
7/16"  
USS Flat Washer

6x



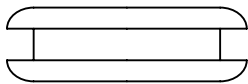
1/2"-13  
Nylock Nut

2x



1-1/4"  
Plastic plug

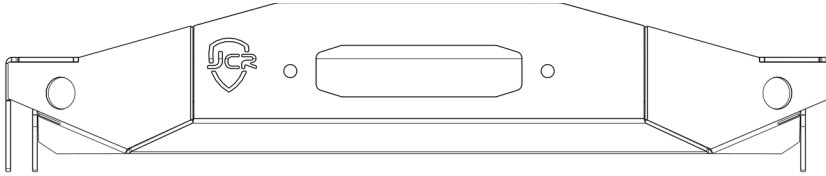
2x



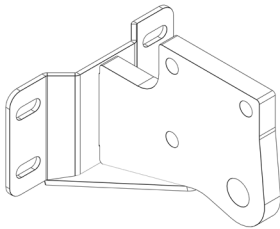
1-1/4"  
Rubber Grommet

# INCLUDED PARTS

1x



2x



# ASSEMBLY

- 1** The first thing you will need to do is remove the plastic panels from around the factory recovery point on each side. To do this, start by removing the four plastic clips holding each in place with a panel tool. Simply pry the center section of each out and then you should be able to pull the clips out by hand. Two clips are located under the recovery points and two are located above them inside of the cutouts. Then, grab the outer edge of each of the two plastic panels and gently pull out to pop them out of their retainers. They will probably still be held in on the inside edge so do the same thing there as well.



- 2** If your vehicle is equipped with parking and proximity sensors, you will need to locate the connector for that wiring harness and disconnect it. Then, use a 15mm socket to remove the three bolts holding the bumper in on each side. Be careful because they are the only things holding the bumper in place. Do not fully remove them until you are ready to pull the bumper off.



# ASSEMBLY

- 3** With the bumper off of the vehicle, use a 10mm socket to remove the small bolt in the middle of each of the metal brackets behind the recovery points. You can then pull the recovery points off.



- 4** Then next few steps are only for those who have proximity and parking sensor and wish to keep them while running the winch plate. If you do not, skip to step 13. First, remove the four bolts holding each of the large metal brackets behind the recovery points so that you can remove the brackets as well. Then, with those out of the way you can use a panel tool to pop all the clips holding the sensor wiring harness out.



# ASSEMBLY

- 5** Next, push the oval clips in from the back of the metal brackets that the sensors were attached to.



- 6** Next, use a T40 torx bit to remove the three bolts holding each bracket in from the top as well as the four holding them in from the bottom. Once those are out of the way you can remove the brackets.



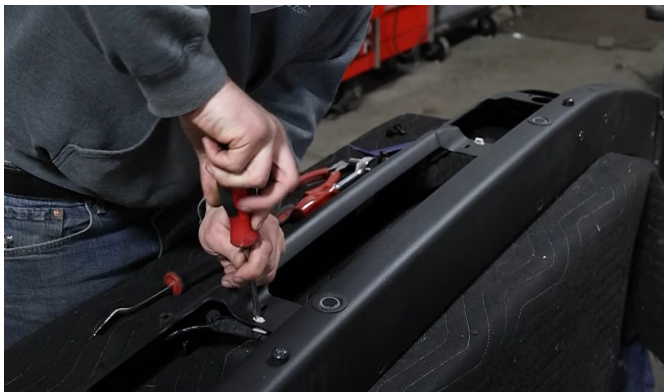


# ASSEMBLY

- 7** Next, push the three oval clips through the center bracket. Then, use the T40 torx bit to remove the two bolts holding the bracket in from the bottom as well as the three in the front of the bumper. Then you can remove that bracket.



- 8** Next you will need to push two clips through the front of the bumper.



# ASSEMBLY

- 9** With everything out of the way, you will need to remove the middle two sensors. To do so, apply pressure from the front with one hand while pulling the tabs on the top and bottom apart.



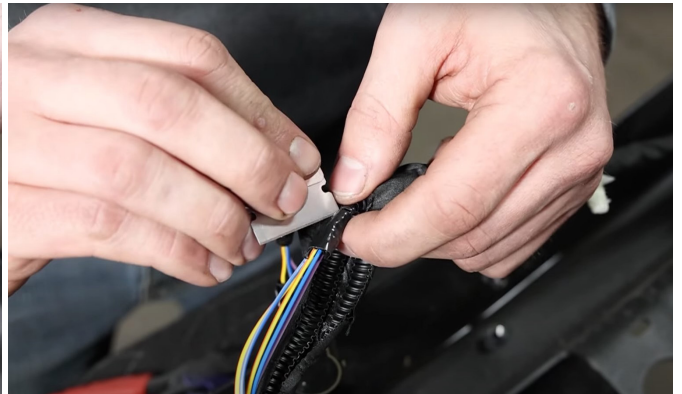
- 10** Next, use wire cutters to carefully remove the two clips that are just past the sensor as you move towards the middle on each side.



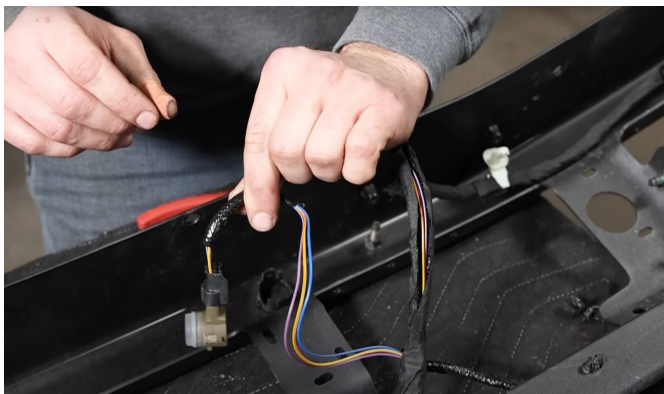


# ASSEMBLY

- 11** Next you will need to remove the tape on the wiring harness from the point where the sensor wires tie into the main wire harness all the way down to the point where the wire harness meets the next main connection. The goal of this is to separate the sensors from the main harness a bit in order to give them enough length to be usable in the winch plate. Do this very carefully using a razor blade. Once you get the outer layer of tape opened up, you will see that the sensor wires are held to the main harness by some electrical tape where they meet. Carefully cut this as well to free the sensor wires.

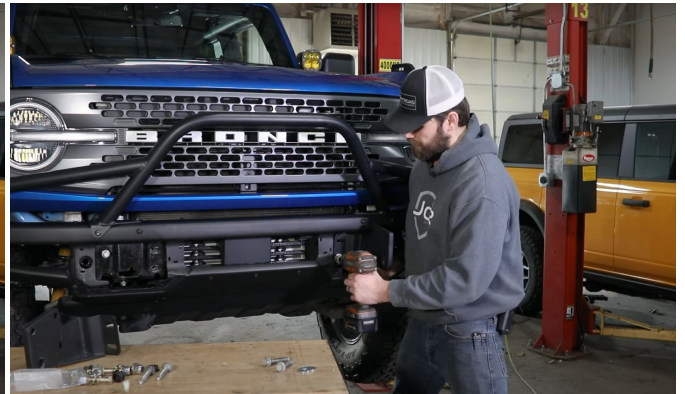


- 12** Once you are done, it should look like the image below. At this point you will need to re-tape the harness as well as the newly exposed wires with electrical tape in order to make sure no wires remain exposed.



# ASSEMBLY

- 13** Next, remount your bumper using only one factory bolt to loosely hold it in place on each side. Then, remove the bolt on one side while holding the bumper and install the winch mount in place through the factory mounting holes using the factory bolts, but with the provided 7/16" USS washers as well. Tighten the bolts to the point that they are snug, but the bumper is still able to slide some. Then repeat on the other side.



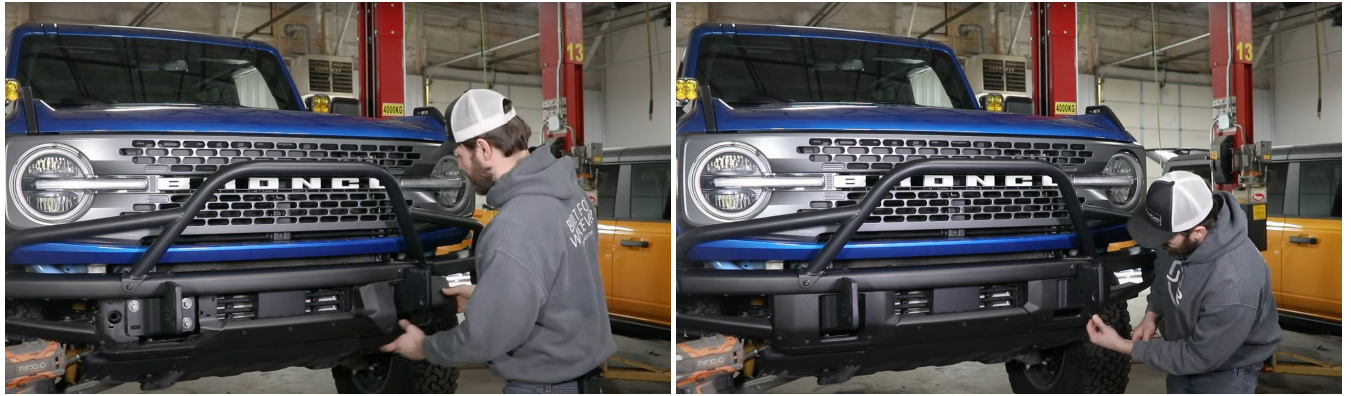
- 14** With both mounts loosely installed, slide the winch plate over the top of them and run one bolt through each side just to hold it in place for now. Then, center the bumper and winch plate on the vehicle and tighten the mounts fully into place. Then, remove the winch plate for now.





# ASSEMBLY

- 15** Next, reinstall the plastic covers over the winch mounts using the factory clips.



- 16** Finally, slide the winch plate back into place and install it using the 1/2" hex head bolts and washers on the outside with another 1/2" washer and a 1/2" nylock nut on the inside. This requires a 3/4" socket and wrench. If you have sensors, rout them up through the bottom of the winch plate and secure them in the provided holes with the provided rubber grommets. If not, insert the provided 1-1/4" plastic caps into them instead.

