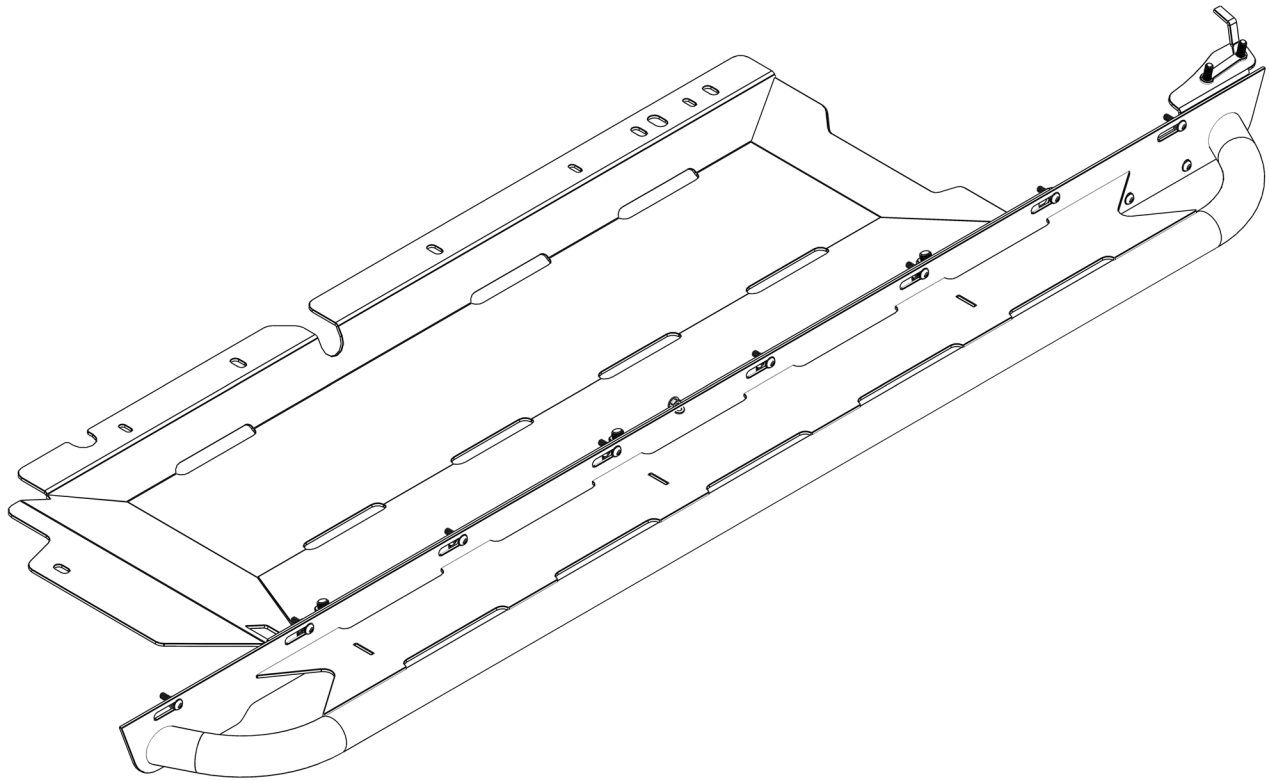




1ST GEN BRONCO SPORT CRUSADER SLIDERS AND/OR EVAP SKIDS

INSTALL INSTRUCTIONS



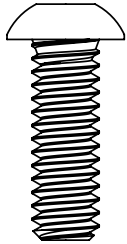
Please read the mounting instructions below carefully before attempting to install.

Be sure to check out the install video on the product page, if available.

Thank you for purchasing from JcROffroad! Checkout our website, www.jcroffroad.com for other great off-road products. Be sure to rate and review our product online. If you have any questions or are missing parts, please don't hesitate to call us at 269-353-1184!

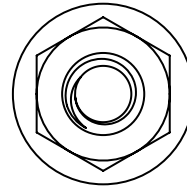
INCLUDED HARDWARE

16x



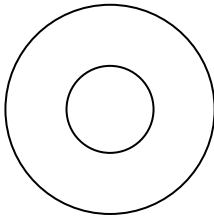
1/4"-20 X 1"
Button Head

16x



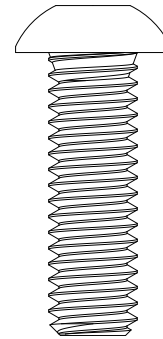
1/4"-20
Serr. Flange Nut

16x



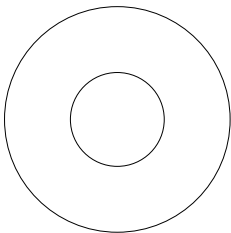
18-8 1/4"
Washer

8x



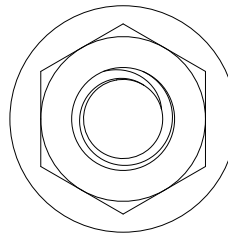
5/16"-18 x 1"
Button Head

6x



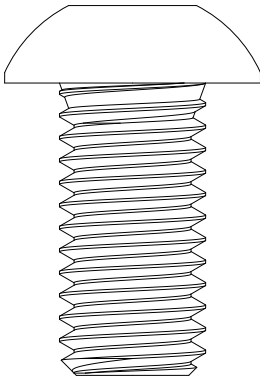
1/4" USS Flat
Washer

4x



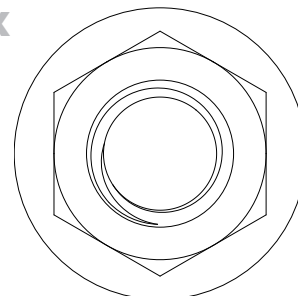
5/16"-18
Serr. Flange Nut

6x



1/2"-13 x 1"
Button Head

6x

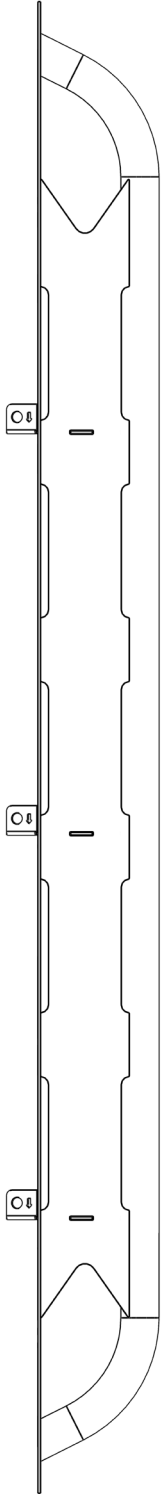


1/2"-13 x 1"
Flange Nut

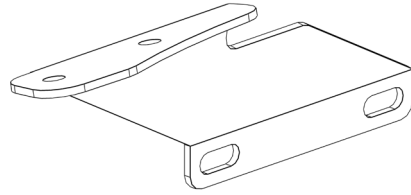
INCLUDED PARTS

SLIDERS

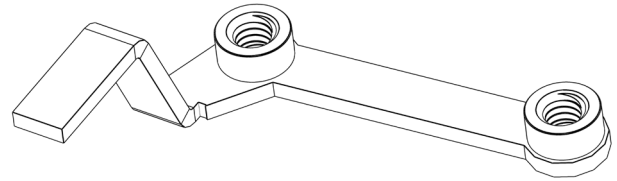
2x



1L/1R



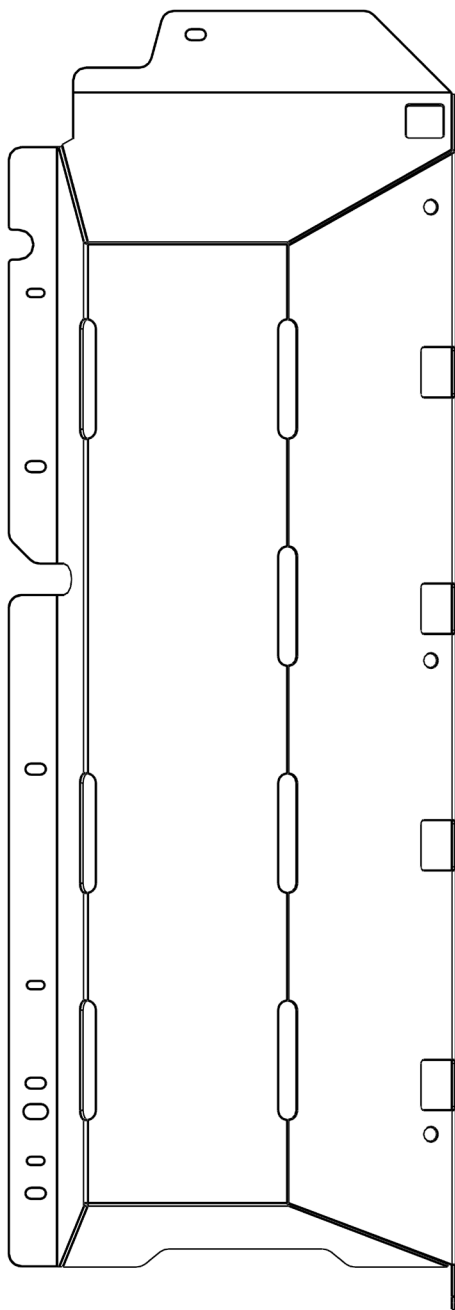
1L/1R



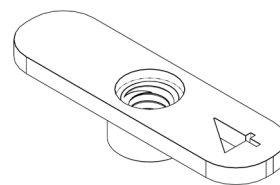
INCLUDED PARTS

EVAP SKIDS

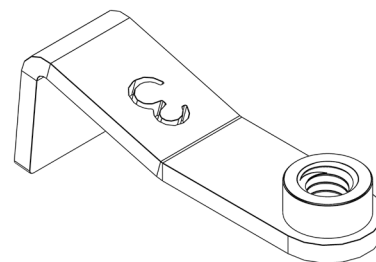
1L/1R



4x



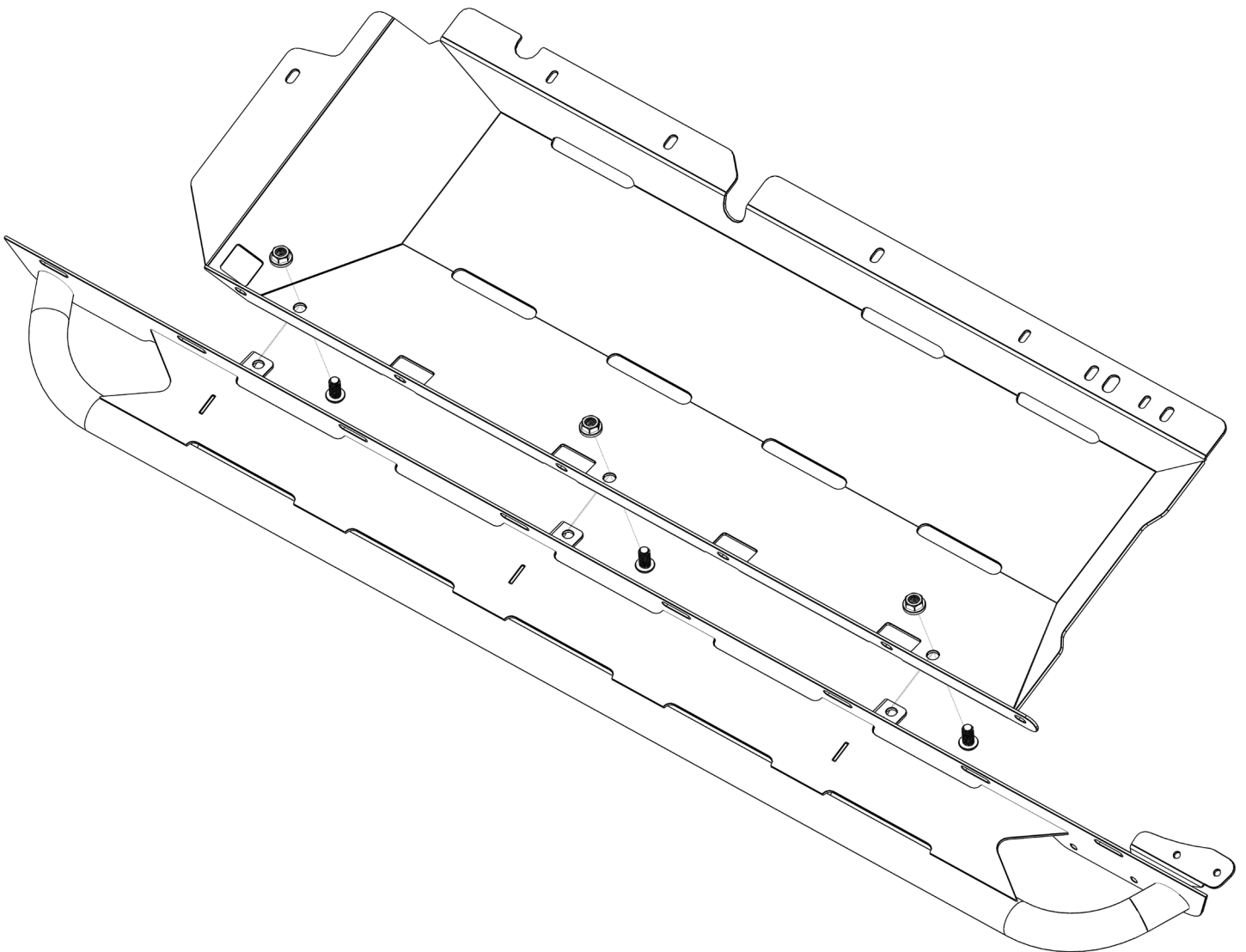
2x



ASSEMBLY

*NOTE - This is a combined install guide, Bronco Sport EVAP skids are required to install the sliders. That being said, if you are only installing the EVAP/floor skids, please skip over steps 1, 5, 14 & 15.

- 1.** To start, take the provided 1/2" button heads and flange nuts and install the skid and slider together using the 3 mounting holes on each, as shown in the orientation below. Be sure to pay attention to the orientation arrows on the slider, and the front flange on the skid with mounting holes that indicate the front. Once the bolts are started, use a 5/16" hex and 3/4" wrench to tighten down.



ASSEMBLY

2. Next, you're going to need to do some modifications where the slider and skid are going to be installed on the pinch seam and that plastic. Start by taking a plastic pry tool and some snips or wire cutters and work your way down and remove the plastic center section of the (6) square cut outs, as shown below. This is going to give you more room and clearance to mark and drill your holes in the pinch seam.



ASSEMBLY

3. With the extra plastic out of the way, you can now mark where to drill your holes. The holes are going to be in the center of each opening on the pinch seam, and you will need to measure $5/16$ " from the bottom edge of the pinch seam. Once you have all of your holes marked with a sharpie, take a center punch and mark you locations again.



ASSEMBLY

4. With your holes now marked, it is time to drill them out. A sharp step bit will work well here. If you don't have access to one, then start small with an 1/8" bit, as shown below, working your way up to the 1/4" hole needed.



ASSEMBLY

5. This step is only for if you are installing the sliders, now that all of your holes are drilled, you will be working on the back section of the same pinch seam. You will need to measure 7-3/4" from the next closest hole and mark it using the same method as before, with it being 5/16" from the bottom edge. Once your hole is marked, drill it out just like the others.



ASSEMBLY

6. With all of the holes drilled, it is now time to work under the vehicle. You will need a 13mm socket to remove (2) of the sub frame tie in bolts on each side of the vehicle, as shown below. With those (4) bolts removed, that is going to allow that bracket to hang down enough so you can slide our skid underneath it to then fasten with that same factory hardware.



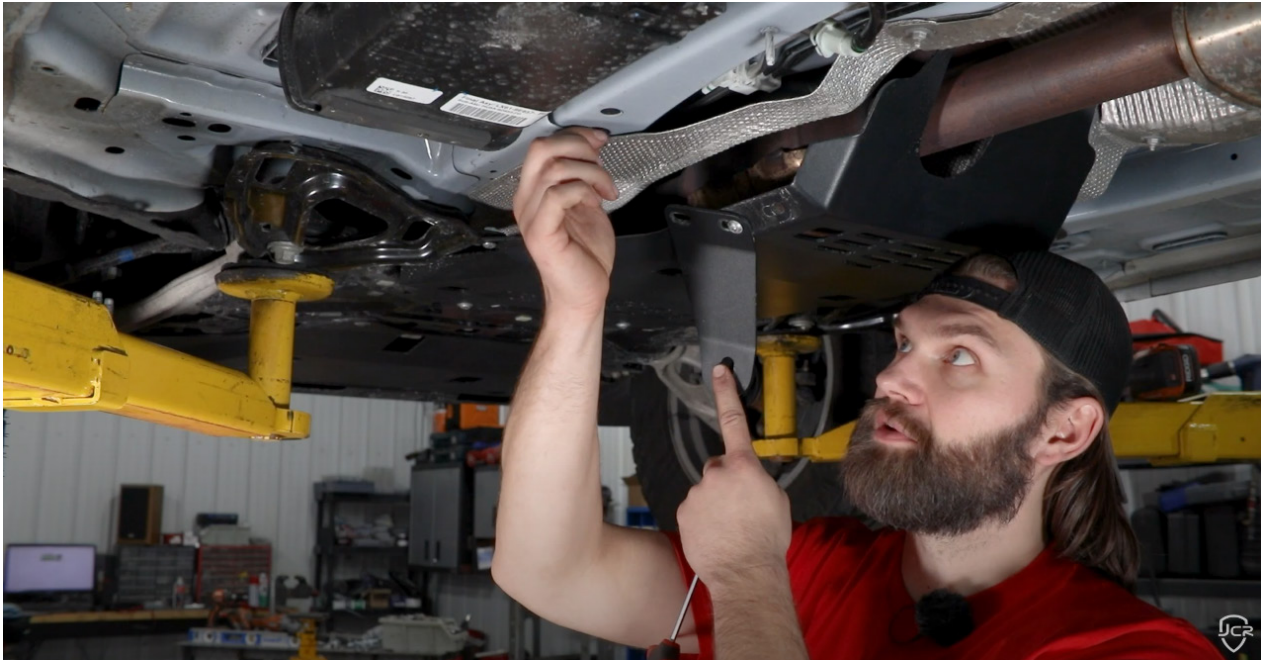
ASSEMBLY

7. This vehicle is equipped with our catalytic converter skid, and if yours is also you will need to loosen the following brackets enough to get them out of the way temporarily in order for our skid to slide underneath them. Ignore this step if you do not have this skid installed.



ASSEMBLY

8. Once the cat skid bracket is out of the way, you will need to install the (2) provided L shaped nut tabs on each side of the vehicle, or if you already had the cat skid then you should already have these nut tabs installed.



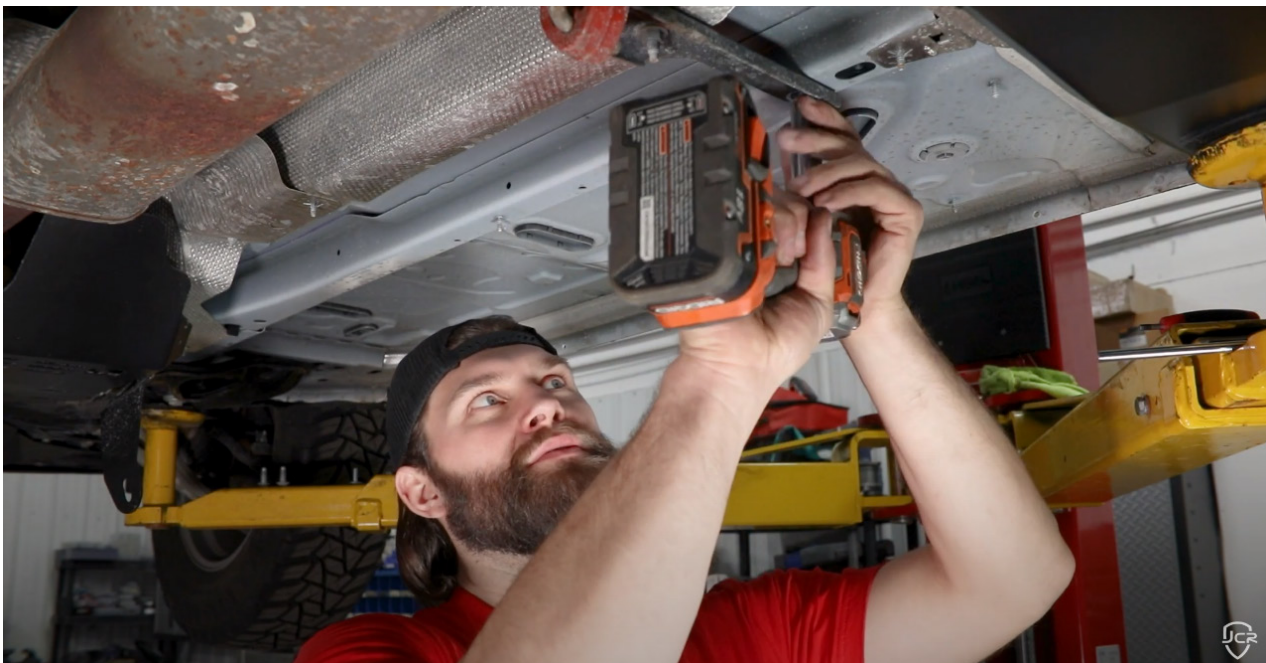
9. Next, you will be installing the (4) provided flat nut tabs, with (2) on each side of the vehicle in the locations shown below. Make sure to insert the tabs with the nut up toward the vehicle, and then centered on the hole that they are inserted into.



ASSEMBLY



- 10.** Take a 13mm socket and remove the (2) factory nuts holding up the exhaust hanger. These nuts will just be removed temporarily and will be reinstalled on top of the skid once that is installed. You can just let that bracket hang there for now after the nuts are removed.



ASSEMBLY

- 11.** All the prep work is now complete and you can begin to slide your skid and slider up into place. You can now start to line up the mounting hole on the front flange of the skid to the factory mounting hole on that sub frame tie in bolt that was removed earlier. Be sure to keep the skid underneath the factory bracket and to keep the slider and the outer mounting flange on the inside of the factory pinch seam. You can now start to loosely install the factory hardware and the tie in bracket if you have the cat skid installed.



ASSEMBLY

- 12.** You need to make sure that the hose is in the appropriate cut out, as shown below.

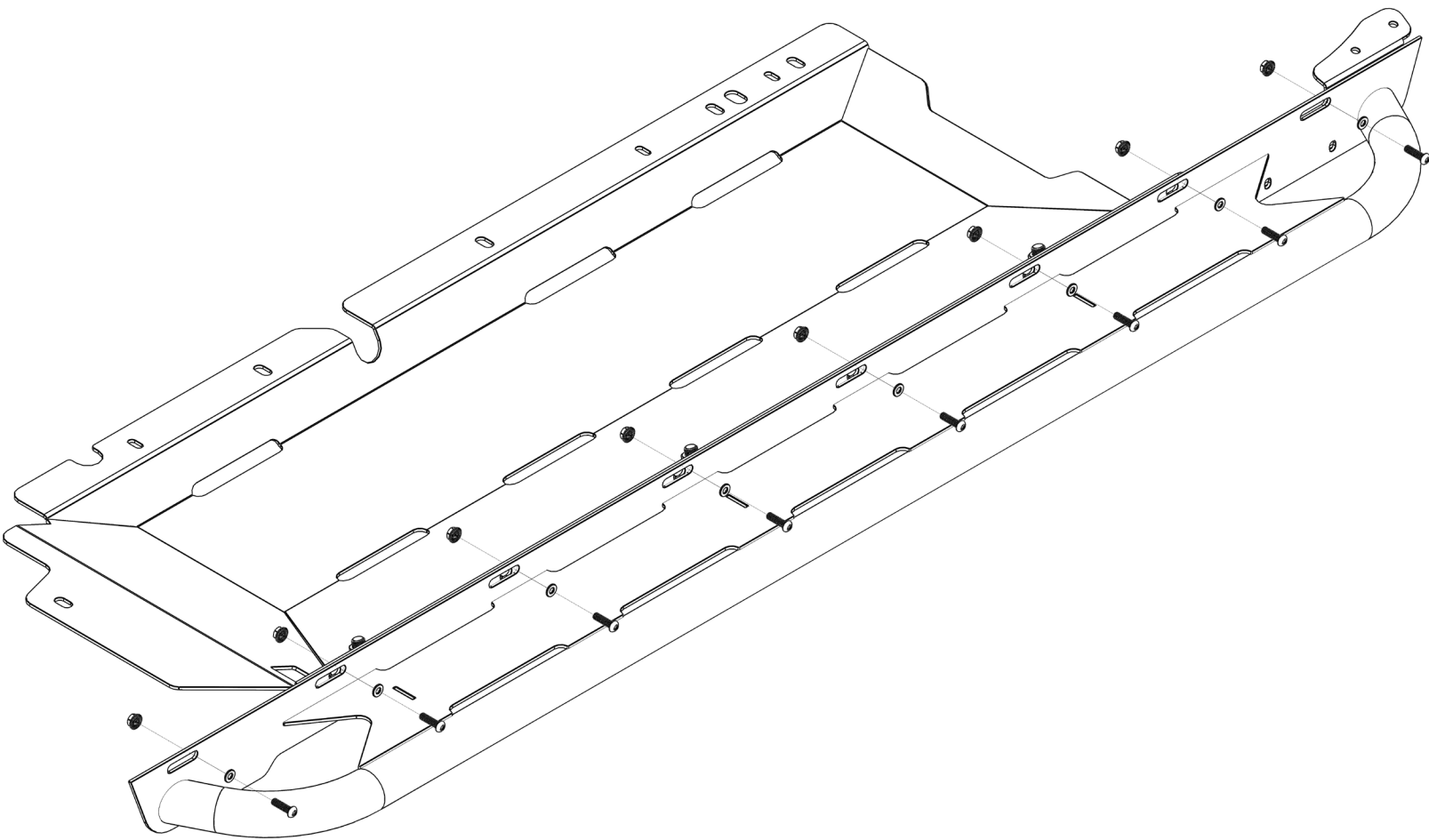


- 13.** You can now start to install the provided 5/16" button heads and washers into the (3) previously installed nut tabs on each side of the vehicle. If you have the cat skid make sure to install that bracket over the skid at the same time you install the button head.



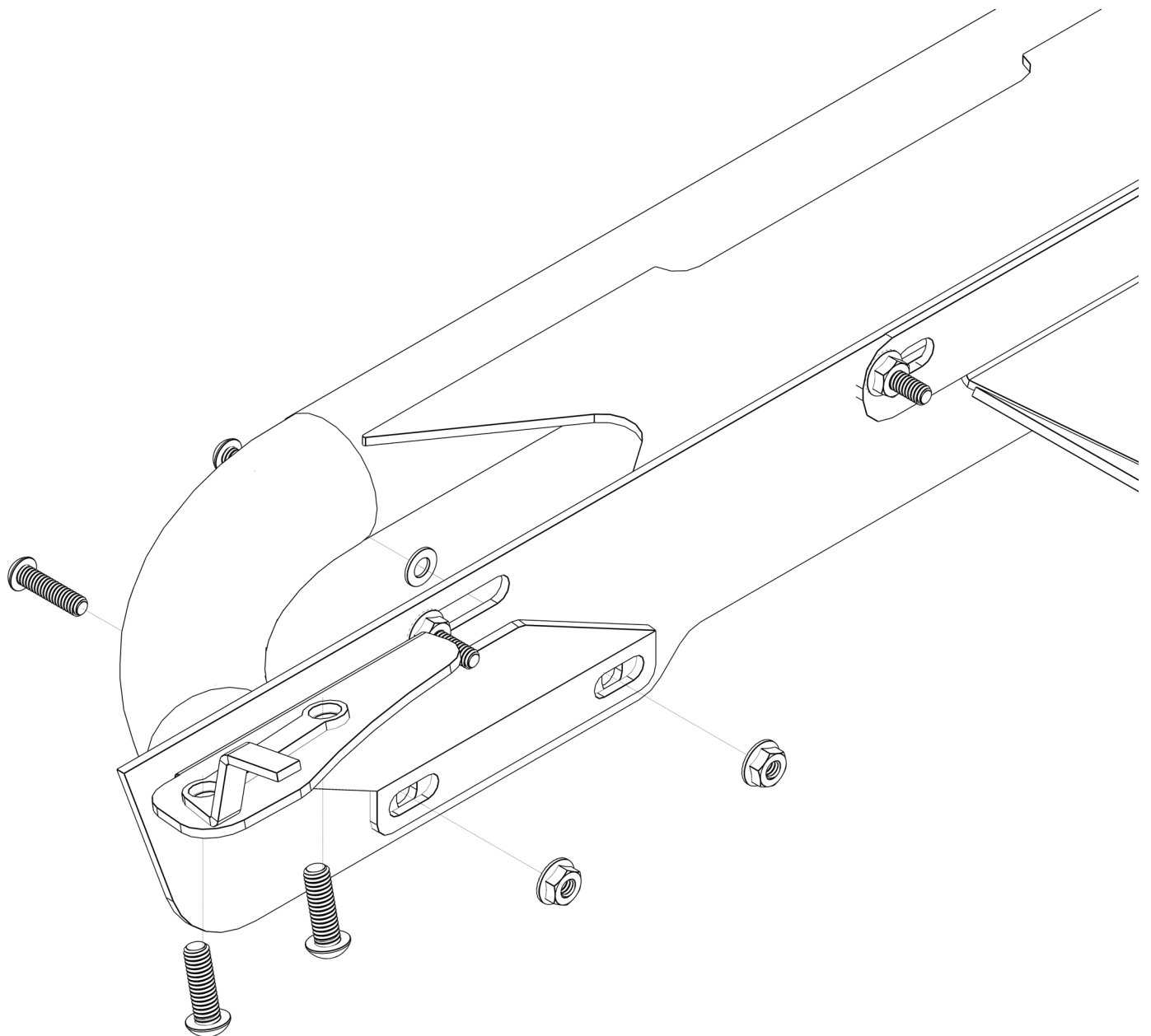
ASSEMBLY

- 14.** You can now move back to the outside of the vehicle to install the provided 1/4"-20 button heads with a washer and flange nut through the factory pinch seam into the slider, through the holes that you drilled out earlier. You will need to use a 5/32 hex with a longer extension to install your hardware. Get them all started before you tighten anything up, and repeat this step on both sides of the vehicle.



ASSEMBLY

- 15.** Now you will need move to the rear of the slider, and take the provided tie in bracket and install the provided 1/4-20 button heads with washers and flange nuts in the bottom holes as shown below. Once that hardware is started, you will take the remaining nut tab and feed it in through the top hole so that it lines up with the top mounting holes on the tie in bracket. There will be one factory hole already there that you will be able to thread in a 5/16" button head and then once that is hand tight you will need to mark and drill out the remaining hole. We reccomend taking the bracket off to drill the hole.



ASSEMBLY

16. Once you have everything tight your installation is now complete, enjoy your new evap skids and sliders! Make sure to go back and re-attach that exhaust hanger over the skid using the factory nuts that were removed.

