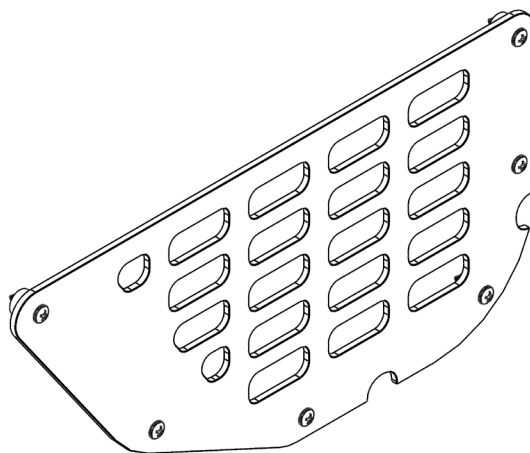




JK WRANGLER FRONT DOOR MOLLE PANEL

INSTALL INSTRUCTIONS



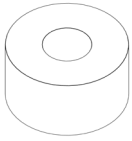
Please read the mounting instructions below carefully before attempting to install.

Check out the install video on the product page for factory rack disassembly.

Thank you for purchasing from JcROffroad! Checkout our website, www.jcroffroad.com for other great off-road products. Be sure to rate and review our product online. If you have any questions or are missing parts, please don't hesitate to call us at 269-353-1184!

INCLUDED HARDWARE

12x



.257" ID X .500" OD X .375"
Nylon Spacer

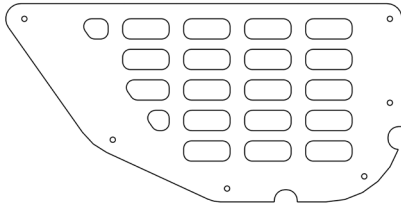
12x



8-15 X 3/4 PAN PHIL
Button Head

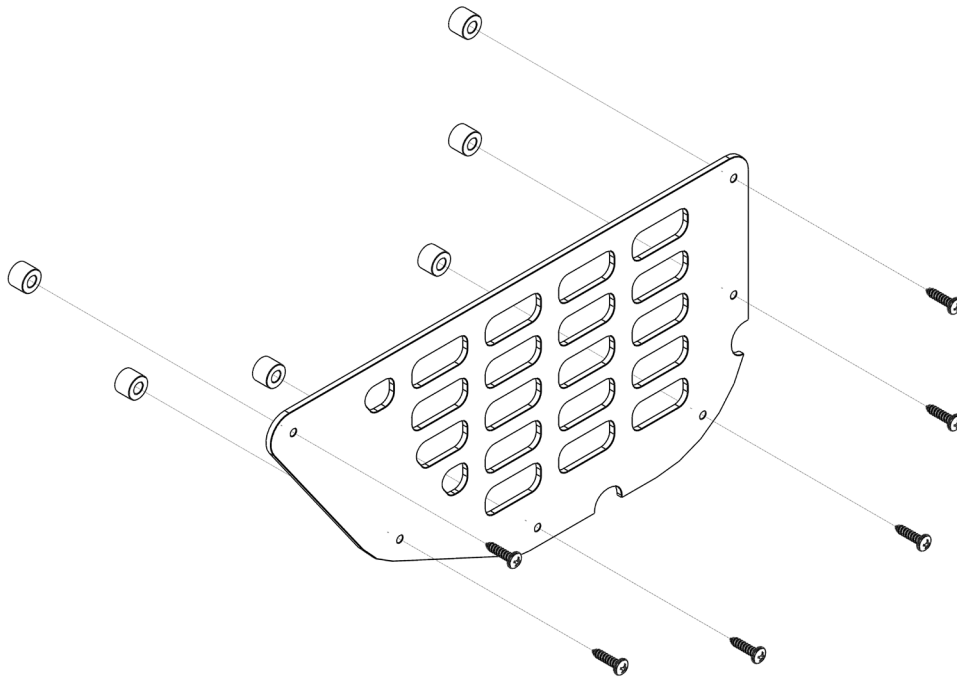
INCLUDED PARTS

2x



ASSEMBLY

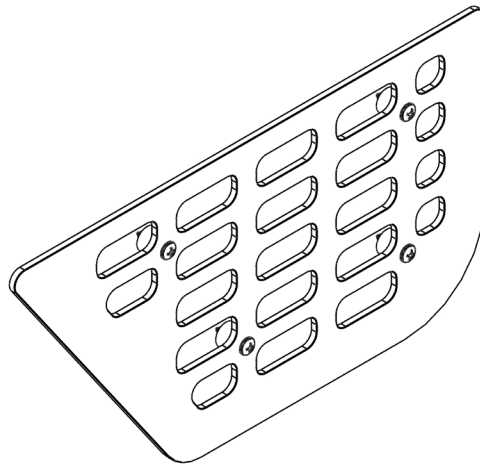
- 1** Before installing, you will have to decide whether or not you want to cut the net out of the factory door pocket. If you do, simply cut the netting as close to the edge as possible and pull it out of the door.
- 2** Next, place the panel over the frame of the pocket and align the two circular cutouts in the panel up with the screw cutouts in the door. With it positioned how you like it, use something to make a mark on the door through each of the holes. It is easiest to do this with an awl or something similar so that the screws have a starting point.
- 3** With the holes marked, start threading the provided screws into each marked location with a screwdriver and back them back out. This will make the panel easier to install.
- 4** Finally, install the panel into the door using the provided screws along with the provided spacers between the panel and the door.





JK WRANGLER REAR DOOR MOLLE PANEL

INSTALL INSTRUCTIONS



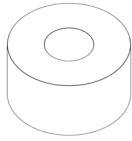
Please read the mounting instructions below carefully before attempting to install.

Check out the install video on the product page for factory rack disassembly.

Thank you for purchasing from JcROffroad! Checkout our website, www.jcroffroad.com for other great off-road products. Be sure to rate and review our product online. If you have any questions or are missing parts, please don't hesitate to call us at 269-353-1184!

INCLUDED HARDWARE

8x



.257" ID X .500" OD X .375"
Nylon Spacer

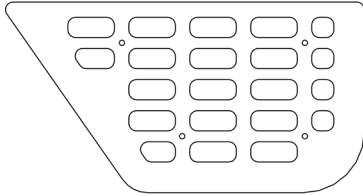
8x



8-15 X 3/4 PAN PHIL
Button Head

INCLUDED PARTS

2x



ASSEMBLY

- 1** Before installing, you will have to decide whether or not you want to cut the net out of the factory door pocket. If you do, simply cut the netting as close to the edge as possible and pull it out of the door.
- 2** Next, place the panel over the frame of the pocket and align the panel with the trim of the factory door pocket. With it positioned how you like it, use something to make a mark on the door through each of the holes. It is easiest to do this with an awl or something similar so that the screws have a starting point.
- 3** With the holes marked, start threading the provided screws into each marked location with a screwdriver and back them back out. This will make the panel easier to install.
- 4** Finally, install the panel into the door using the provided screws along with the provided spacers between the panel and the door.

