

JK BODY MOUNTED TIRE CARRIER INSTALLATION INSTRUCTIONS

TOOLS NEEDED

- 3/4 Wrench or Socket
- 9/16 Wrench or Socket
- 13mm Socket
- 5/8 Allen
- 8mm Allen
- 6mm Allen
- T20 Torx
- T50 Torx
- Cutting tool (cut off wheel, sawsall, etc)
- Clamp or Vice
- Hammer
- Punch
- Grease

OPTIONAL TOOLS

HARDWARE

- 8 - 8mm x 1.25 Button
- 2 - 3/8 x 2.25 Hex
- 5 - 5/16 Washers
- 4 - 3/8 Flange Nut
- 2 - 10mm x 90mm Socket Head
- 4 - 10mm Washer
- 2 - 10mm Nut
- 2 - 1/2 x 4 Socket Head
- 4 - 1/2 Washer
- 4 - 1/2 Flange Nut
- 2 - 1/2 x 1.75 Hex
- 2 - 1/2 Washer

Please read the mounting instructions below carefully before attempting to install.

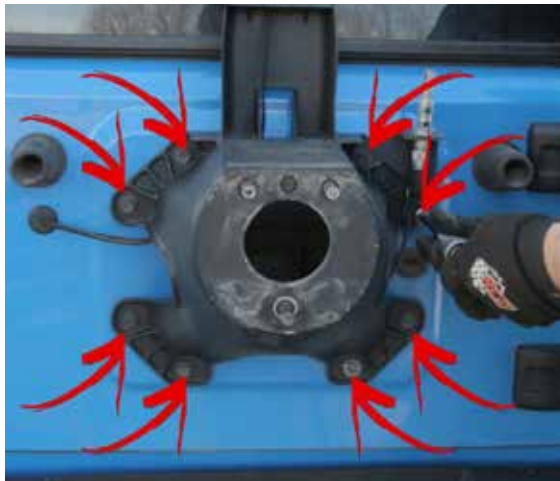
Thank you for purchasing your new Body mount Tire Carrier from JcR Offroad! Check out our website, www.jcroffroad.com for other great off-road products. Be sure to rate and review our product online. If you have any questions or are missing parts, please don't hesitate to call us at 269-353-1184 x20!

It is always best to trial install before painting/finishing to ensure proper fit. You should first install your JcrOffroad rear bumper before installing this product. When installing this tire carrier, take special care in keeping paint away from bearing surfaces and bearing cap threads. If using a bed liner type product, you may need to use a drill or file to open holes or openings to the proper size.

1 Remove your spare tire from your current carrier.



2 If you have another after market carrier, uninstall that carrier. If you still have the stock carrier, use the 13mm socket to remove the eight bolts holding the stock carrier to the tailgate.



- 3** Using the T20 torx, remove the four screws that hold the third break light bracket together. Unplug the third break light and pull the wire out of the bracket.



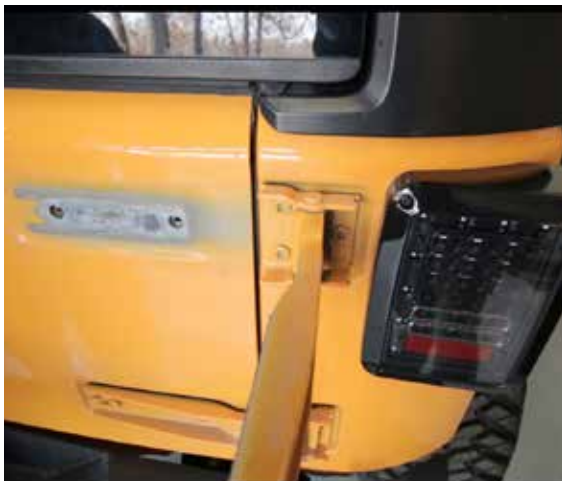
- 4** Remove the plastic vent. It is held in with plastic clips that can be pushed down with a flat head screwdriver. Once removed it should look like this.



- 5** Remove the plastic around the tailgate hinges. On the body side, lift up on the top, pulling away from the body. On the tailgate side, pry near the hinge and slide towards the drivers side to remove.



- 6** Time to remove the hinges. Keep the tailgate closed and only remove ONE at a time so that you do not have to reset your tailgate alignment. Using the 13mm socket, remove the two bolts holding the top hinge plate to the tailgate. Open the hinge until it is straight out so you can get to the torx bolts holding the hinge. Use the T50 torx to remove the hinge bolts.



- 7** Remove the pin in the center of the hinge. Use a vice or clamp to hold the long arm of the hinge in place. Take your preferred cutting tool and cut the pin in half. Use a punch and hammer to tap the pin out of the hinge.



- 8** Use the torx bolts that you removed to mount the JcrOffroad hinge to the body just tight enough to hold the hinge to the body. Take the long arm of the stock hinge and slide into the Jcr hinge, line up the holes in the arm with the holes closest to the body. Depending on the condition of your arm some sanding or cleaning may be needed to fit smoothly into the Jcr hinge. Attach the arm to the hinge with the 10mm socket bolt, washer and flange nut loosely. Use the outline in the paint on the tailgate to align the arm to the tailgate, then tighten down the torx bolts with the T50. Now tighten down the 10mm socket bolt with the 8mm allen and the 13mm bolts to attach the arm to the tailgate.



* Repeat steps 6 - 8 on the bottom hinge now.

9 Attach the carrier tailgate plate to the center of the tailgate using the provided 8mm bolts using the 6mm allen head wrench.



10 Install the isolator using the 3/8 x 2.25 bolts, washers, and flange nuts. Then attach the female end of the heim joint to the top tabs using the 1/2 x 1.75 bolts, washers, and flange nuts. Make sure to place the miss alignment washers on either side of the joint with the small side towards the joint. Both the isolator and the joint should be finger tight.



11 Assemble the carrier bushings.

a Take the four bushing pieces and apply grease to the inside and outside but not the top or lip.



b Slide one greased bushing into the top and bottom of one of tube on the carrier.



c Slide the bushing sleeve into the center hole in the bushing. This might be tight, if so you can use a clamp to press the sleeve into the bushing.



* Repeat this for both tubes on the carrier.

12 Attach the carrier to the Jeep, this is best done with the help of a friend. Grease the 1/2 socket bolts. Lift carrier up and place the bushings between the top and bottom tabs of the hinges. If the mounts are tight, you can tap them apart some. Once the bushings are lined up with the Jcr hinge tabs, place the greased 1/2 socket bolts with washer through the mounts and bushing. Thread a flange nut finger tight on to the 1/2 bolts.



13 Adjusting the heim.

- a** With both the carrier and the tailgate open, line up the male end of the heim between the tabs on the carrier with the misalignment spacers on both side of the joint and the small end facing the joint. Place the 1/2 x 1.75 both through the heim to keep in place.
- b** Close the carrier, you will see a wedge shaped piece on the carrier slide into the isolator on the tailgate plate. That wedge should be making firm contact with the isolator, but not so much that its hard to close the gate.
- c** If the carrier can not close or is hard to close, open the tailgate and carrier, pull the 1/2 bolt out of the male end of the heim and turn the heim to extend it. Then place back between the tabs and replace the 1/2 bolt and try closing it again.
- d** If the wedge is not making firm contact with the isolator, open the tailgate and carrier, pull the 1/2 bolt out the male end of the heim and turn the heim to shorten it. Then place back between the tabs and replace the 1/2 bolt and try closing again.
- e** Once the heim is adjusted correctly, tighten the jam nut on the heim.



- 13** When you closed the carrier, the isolator should have adjusted into position and stayed there. Tighten the isolator mounting bolts now.

14 Install the poly bumpstop in the hole near the tabs for the heim joint with the 3/8 flange nut.
| Tighten with the 9/16 wrench.

15 Tighten the 1/2 socket bolts holding the carrier to the Jcr hinge now.

16 Assemble and install the tire mount.

a Place tire mount part 1 inside of part 2.
Place the carriage bolts through the outside with the nuts on the inside and finger tighten.



b Use a tape measure and find half the height of your tire. Use this measurement to set the vertical mounting position (When in doubt, always round up). Use the four 1/2 x 1.75 Hex head bolts are to mount the tire mount to the carrier.

c Place the tire face down and lay something straight, like a broom handle, across the tire. Measure from the inside mounting surface of the wheel to the bottom of the straight edge. Subtract 1/4 inch from this measurement and set the length of your tire mount and tighten down with the 3/4 wrench and socket.



* **Wheels with more than 5 inches of back spacing may need a spacer to sit properly.
The tire should compress slightly against the carrier.
If installing optional 3rd brake light, do that now.**

- 17** Place your tire on the tire mount and use the 1/2 lug nuts provided to hold in place. Use a 3/4 deep well socket to tighten the lugs down.



- 18** Now that the tire mounted, grab the top of the tire and give it a good shake to see if rattles or squeaks. If it does, start with the isolator and see if the heim needs to be readjusted now that the tire is on. Next common place is the 1/2 carriage bolts holding the tire mount together might need to be tighter. If noise still persists, double check all bolts for tightness.

* Enjoy that new body mount carrier!

Any questions about this install, give us a call at 269-353-1184 or email at tech@jcroffroad.com.

JKBC - BODY MOUNTED GATE SWINGING - JK WRANGLER (07-16)

Item Code Legend

EX: JKBC-PC

-PC : Powdercoated

-BARE : Bare Metal



Additional Parts



Poly Bumpstop



Heim Joint



Isolator



Tire Mount Part 1 & 2



Tailgate Plate



Jcr Hinge X2



Bushing X4



Bushing Sleeve X2

Bolt Pack:

JKBC-BP:

- 8 - 8mm x 1.25 Button
- 2 - 3/8 x 2.25 Hex
- 5 - 5/16 Washers
- 4 - 3/8 Flange Nut
- 2 - 10mm x 90mm Socket Head
- 4 - 10mm Washer
- 2 - 10mm Nut
- 2 - 1/2 x 4 Socket Head
- 4 - 1/2 Washer
- 4 - 1/2 Flange Nut
- 2 - 1/2 x 1.75 Hex
- 2 - 1/2 Washer

Revised: 04/14/16