



JK TRANSFER CASE SKID INSTALLATION INSTRUCTIONS

TOOLS NEEDED

- 3/4" Socket
- 18mm Socket
- 1/2" drill bit

HARDWARE

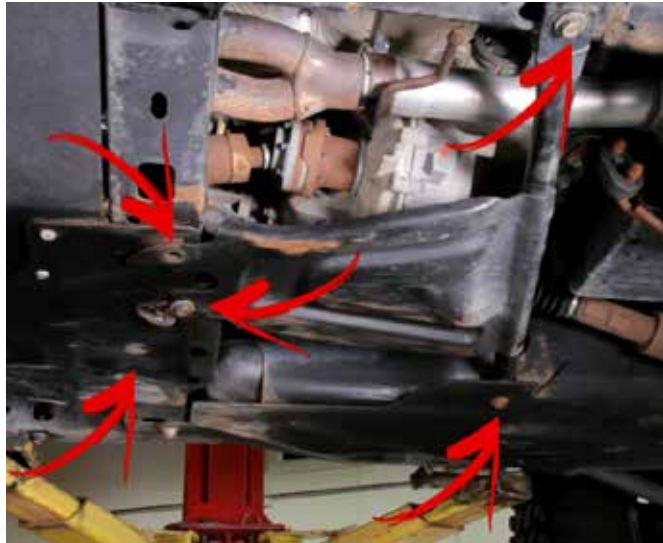
- 1/2" x 1" bolt (1)
- 1/2" washer (1)

**Please read the mounting instructions below
carefully before attempting to install.**

Thank you for purchasing your new skid from JcR Offroad! Check out our website, www.jcroffroad.com for other great off-road products. Be sure to rate and review our product online. If you have any questions or are missing parts, please don't hesitate to call us at 269-353-1184 x20!

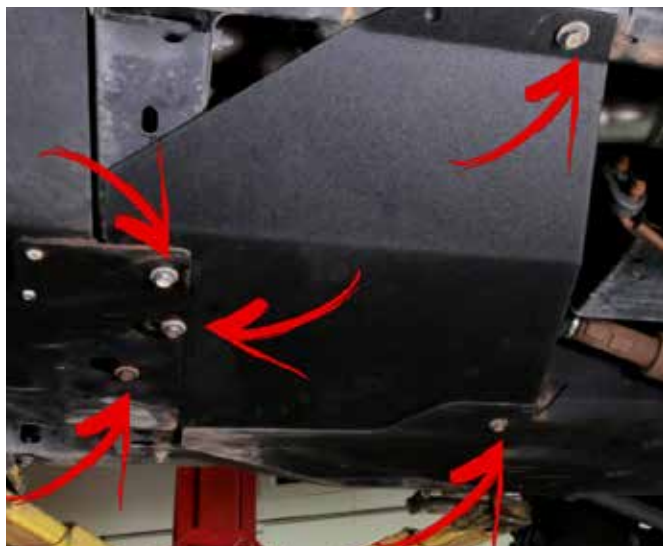
It is always best to trial install before painting/finishing to ensure proper fit. If we need to make a repair/modification will not be responsible for finishes

1 Use the 18mm socket to remove the five bolts holding the factory t-case skid [if equipped].



2 Using a friend or a jack lift the JcrOffroad Transfer Case Skid into place and thread back in five mounting bolts.

- * If you have an after market engine skid, you will want to slide the front of the transfer case skid between the crossmember and the engine skid.
- * If you have an after market fuel tank skid, the transfer case skid can go either under or over the fuel tank skid.



- 3** On driver side frame, a 1/2" hole will need to be drilled. After drilling the hole, paint the exposed metal. Insert frame nut guide (supplied) into hole in the side of the frame above the hole you just drilled, install 1/2" bolt and washer, then tighten.



- 4** Go over and check that all bolts are tight. Its recommended that after 500 miles you recheck all the mounting bolts are tight. See you on the trails!

JKSD-TC - TRANSFER CASE SKID PLATE - JK WRANGLER



Item Code Legend
EX: JKSD-TC-PC
-PC : Powdercoated
-BARE : Bare Metal



Additional Parts



Frame Tab

Bolt Pack:
JKSD-TC-BP:
• 1 - 1/2 X 1 Hex Bolt
• 1 - 1/2 Flat Washer