

# XJ CHEROKEE HALF DOORS INSTALLATION INSTRUCTIONS

## TOOLS NEEDED

- T40 Torx Bit
- 9/16 Socket Wrench
- Channellock

## HARDWARE

- 1/4 x1 HEX BOLT (4)
- 5/16 Reg Split WASHER (4)
- 1/4-20 SERR FLANGE NUT (4)
- 5/16-18-3/4 BUTTON HEAD (12)
- 5/16-18 SERR FLANGE NUT (12)
- 1/4 USS FLAT WASHER (4)
- 5/16 USS FLAT WASHER (12)

**Please read the mounting instructions below  
carefully before attempting to install.**

Thank you for purchasing your new half doors from JcR Offroad!  
Checkout our website, [www.jcroffroad.com](http://www.jcroffroad.com) for other great off-  
road products. Be sure to rate and review our product online. If  
you have any questions or are missing parts, please don't hesitate  
to call us at 269-353-1184!

- 1** We recommend you remove the seat to reach the screws holding the main panel in place. The panel must come off to install the doors. If you have a small screwdriver to fit between the panel and the seat, you will not need to remove the seat.



- 2** Once you remove the panels, the next step is to disconnect the wires from the door (Note: If you start with the drivers side door, you wont be able to roll down the windows which will make the process difficult when its time to take the heavy doors off). Once you disconnect the wires leading to the door, carefully pull the wires through the door.



**Be very careful when pulling the wires through the door. Do not tug on the wires as they may become loose or separate.**

- 3** Next, you will need to remove the plunger for the dome light. Use a 9/16 Socket Wrench to remove the plunger switch. Pull the plunger switch from the wire then carefully place the end of the wire in the slot as seen in picture C.

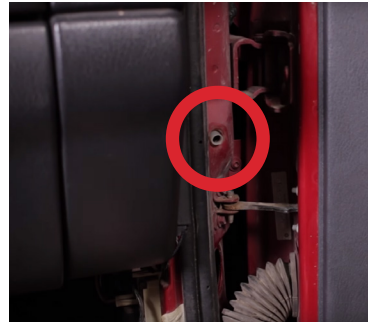
**A**



**B**



**C**



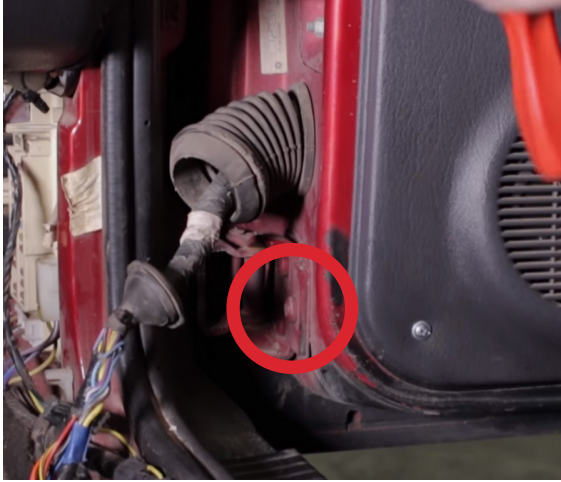
**4**

Next, you must remove the pin from the door stop. Open your Channellocks, placing the bottom on the pin and the top on the body mount and squeeze to apply pressure and remove the pin. This can also be done using a hammer.



**5**

Next, remove the torx bolts from the door. Remove 5 of the 6 bolts on the bottom while leaving one bolt on the top. We recommend you have a friend hold the door for you while you remove the 6th bolt on top so the door does not get damaged.



**6**

Repeat steps 1-5 for the back doors. Remember to remove the panels, disconnect the wires leading into the door, and then removing the pin that holds the door stop in place. Before removing the torx bolts from the hinges, close the door and loosen the bolts from the opposite side as shown in the picture below. Then, you may repeat the steps used in removing the front door.



**7** Next, it's time to mount the half doors. Place a button head bolt in the top and bottom hinges facing outward as shown in picture A. This will help align the door when you prepare to mount. In picture B we have mounted the door, securing a nut to the top and bottom bolts to hold the door in place. Once you have mounted the door, you can put the remaining bolts in the hinges and loosely tighten them.

**A**



**B**



**C**



**D**



The washers provided in the kit are meant specifically for shimming the half doors (picture D). All Jeeps are different so the placement of the door will be different for most.

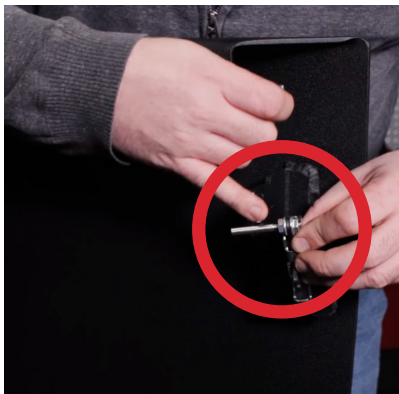
**8** Once both doors are mounted, make sure the doors are flush with the base of the vehicle before securely tightening them. If they are not flush, be sure to use a washer provided in the hardware kit to shim the doors.



**9** After tightening the door, it's time to install the latch. Place the threaded rod through the top of the latch as shown in picture A. Once the threaded rod is secured into the latch, bolt the latch onto the door as shown in picture B. Just like the doors, the latch may need to be shimmed in order to latch properly. To shim the door, take the washers we have provided and place them between the bolts and the latch. The final step will be to place the rubber stopper onto the door in picture C.



**A**



**B**



**C**

