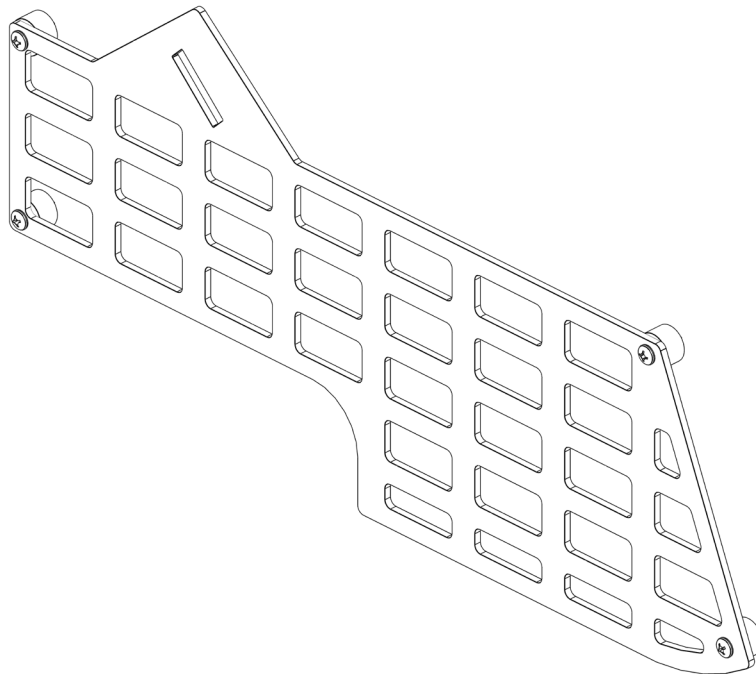




6TH GEN BRONCO CENTER CONSOLE MOLLE PANEL

INSTALL INSTRUCTIONS



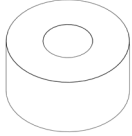
Please read the mounting instructions below carefully before attempting to install.

Check out the install video on the product page for factory rack disassembly.

Thank you for purchasing from JcROffroad! Checkout our website, www.jcroffroad.com for other great off-road products. Be sure to rate and review our product online. If you have any questions or are missing parts, please don't hesitate to call us at 269-353-1184!

INCLUDED HARDWARE

8x



.257" ID X .500" OD X .375"
Nylon Spacer

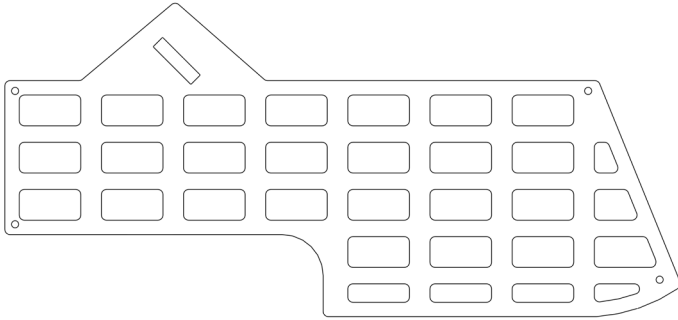
8x



8-15 X 3/4 PAN PHIL
Button Head

INCLUDED PARTS

2x



ASSEMBLY

- 1** Move your seat all the way back. Line up the panel so the top edge is flush with the line running along the top edge of the side of the center console. Then, measure 2.5" back from the small rectangular cutout in the center console, under the dash and place the front, rectangular end the of the panel there. Once it is in position, make a mark in each of the mounting holes in the panel.
- 2** Make a hole in the center console at each mark using either a 1/8" drill bit, or a pick. Only drill deep enough to get the screws started, it is not necessary to drill all the way through. This will prevent any possibility of damaging anything behind the console. Then, install the panel using a Phillips screwdriver. Use 1 screw and 1 spacer per hole.

