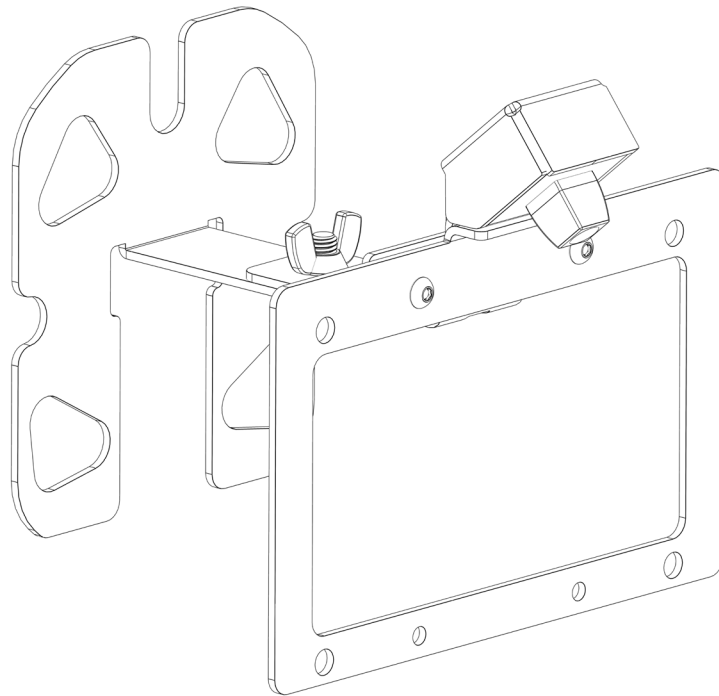




UNIVERSAL LICENSE PLATE AND CAMERA RELOCATION BRACKET

INSTALL INSTRUCTIONS



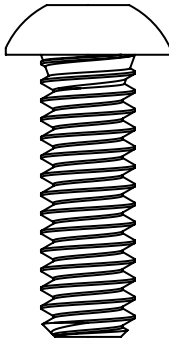
Please read the mounting instructions below carefully before attempting to install.

Be sure to check out the install video on the product page, if available.

Thank you for purchasing from JcRoffroad! Checkout our website, www.jcroffroad.com for other great off-road products. Be sure to rate and review our product online. If you have any questions or are missing parts, please don't hesitate to call us at 269-353-1184!

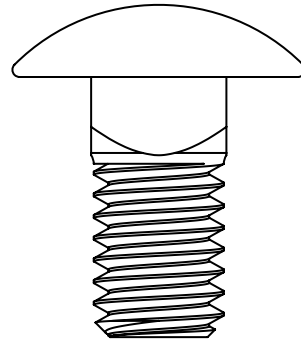
INCLUDED HARDWARE

6x



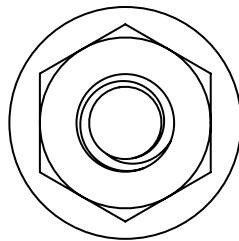
1/4"-20 X 3/4"
Button Head

1x



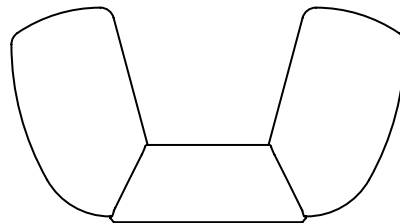
3/8"-16 X 3/4"
Carriage Bolt

6x



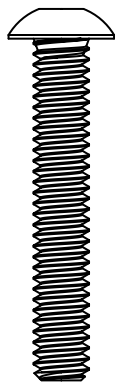
1/4"-20
Serr. Flange Nut

1x



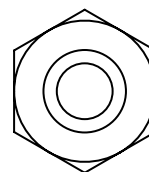
3/8"-16
Wing Nut

6x



8-32 X 1"
Button Head

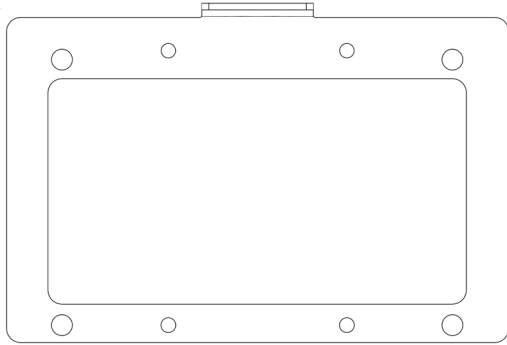
6x



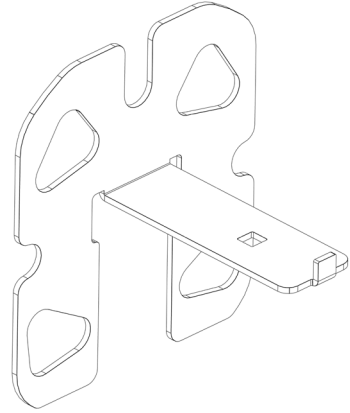
8-32
Locknut

INCLUDED PARTS

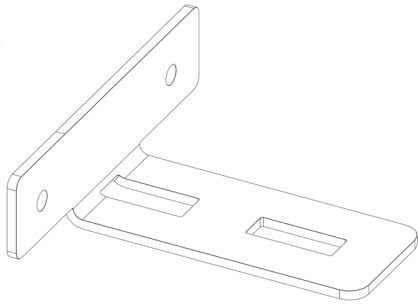
1x



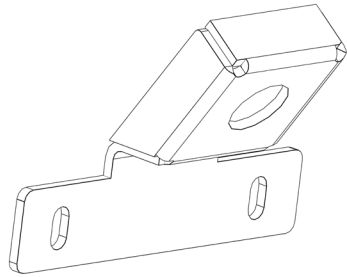
1x



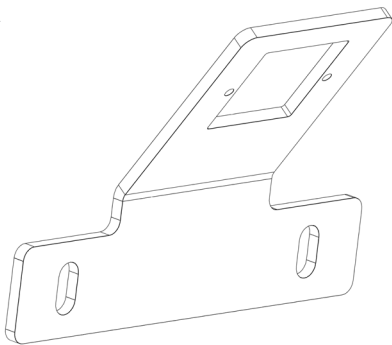
1x



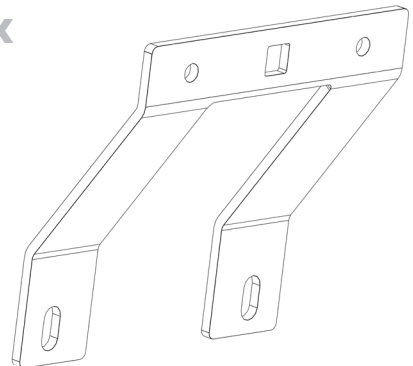
1x



1x

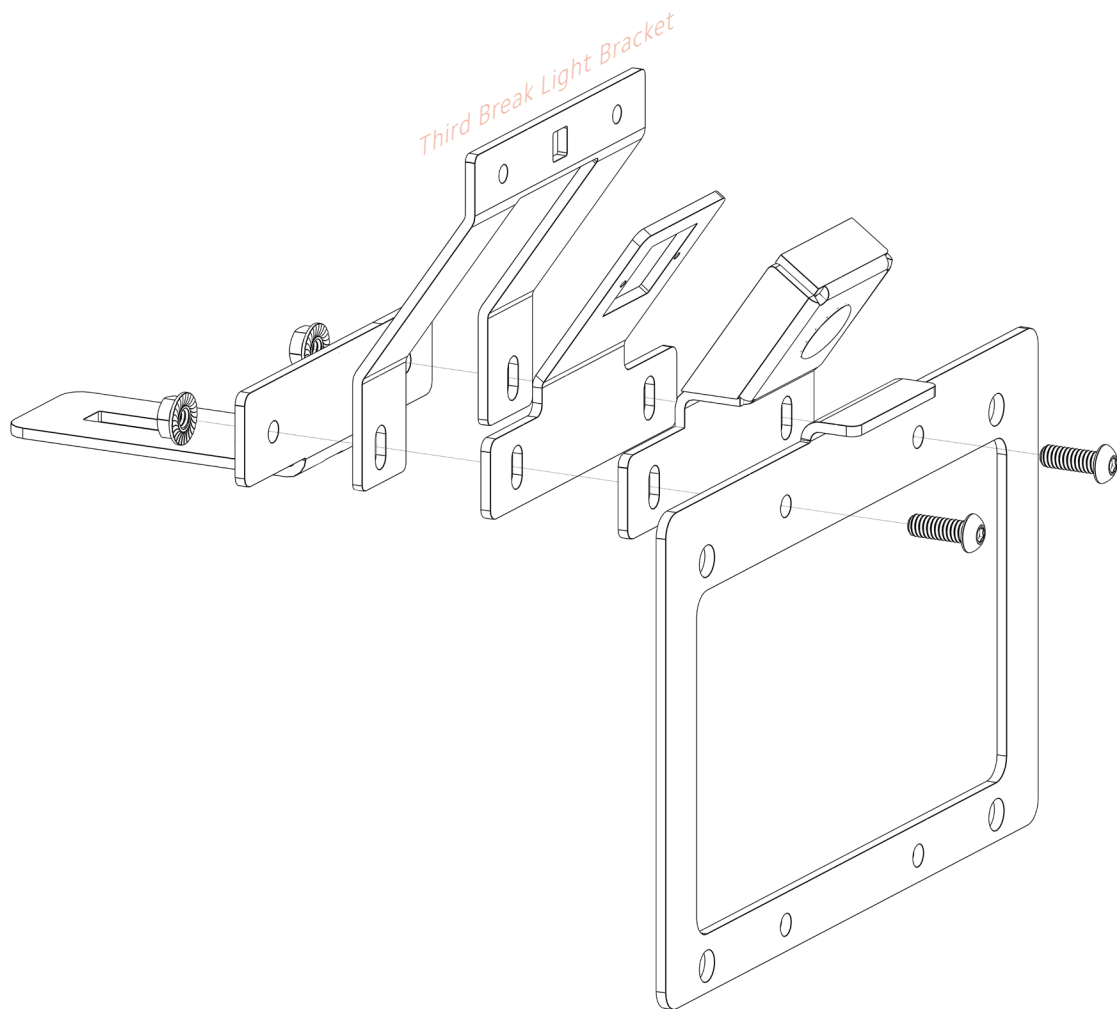


1x



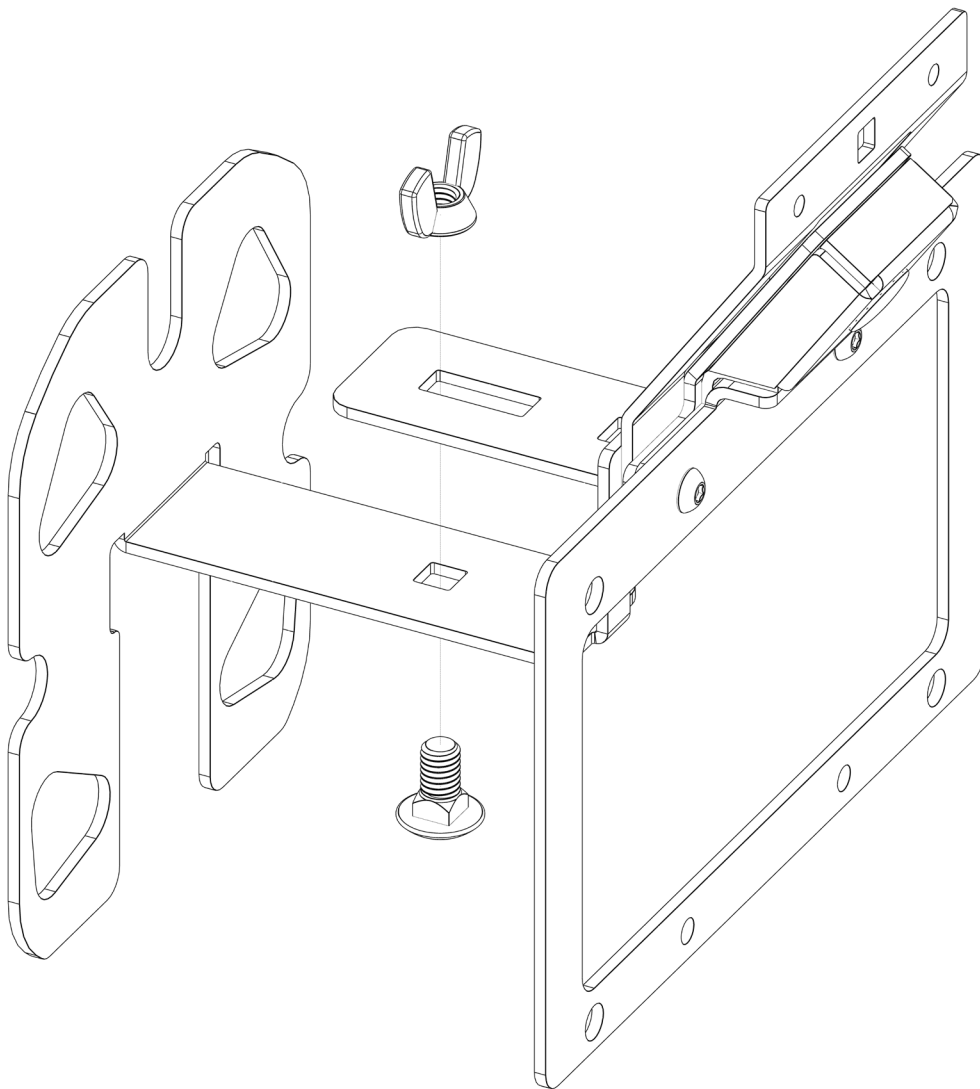
ASSEMBLY

- 1 Assemble the brackets together as shown below using the 1/4"-20 X 3/4" button head bolts and 1/4"-20 serr. flange nuts. If you are choosing not to use our third break light, leave that bracket out.



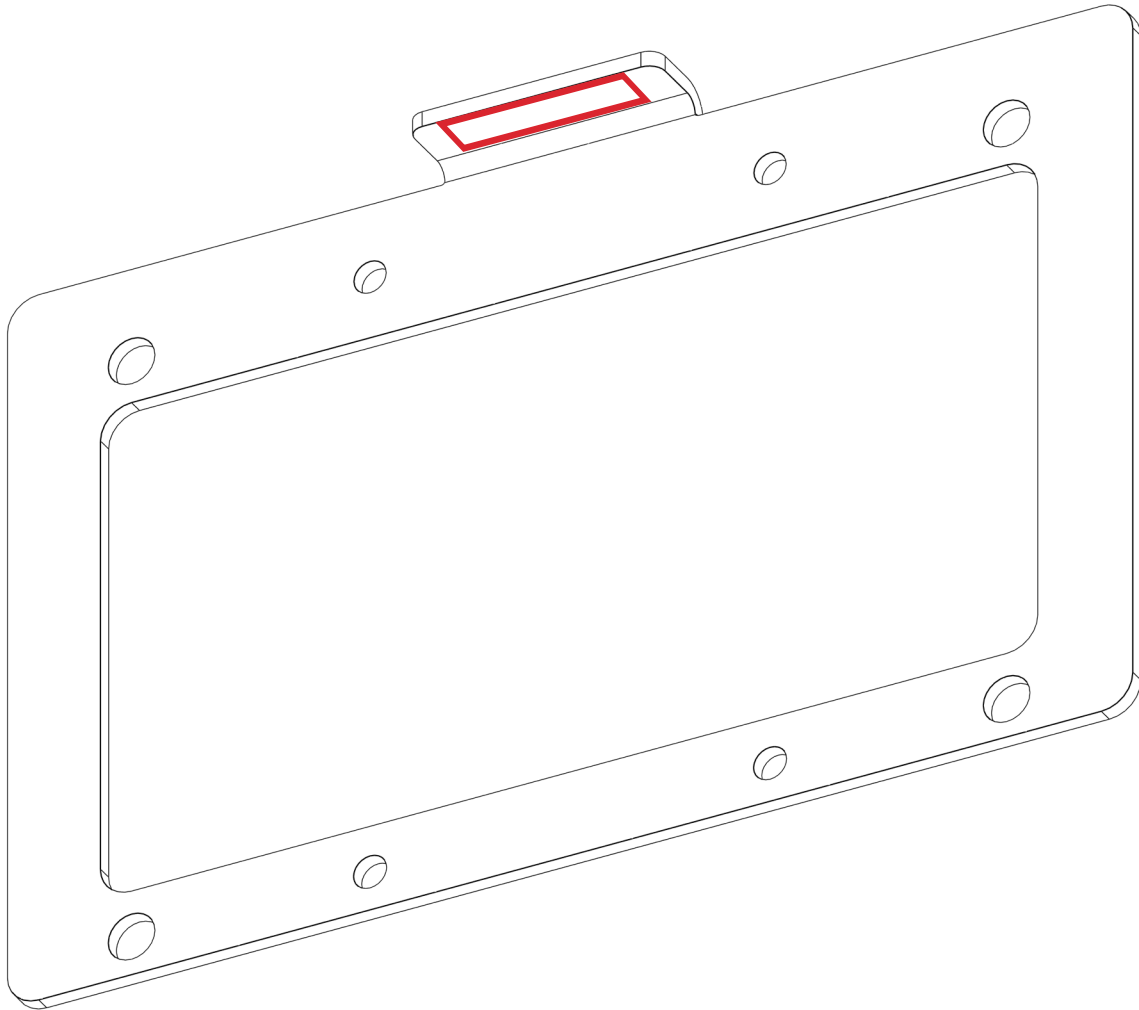
ASSEMBLY

- 2 Place the whole assembly onto the carrier-side bracket that is installed behind your spare and bolt them together using the 3/8"-16 X 3/4" carriage bolt and 3/8"-16 wing nut. It is up to you whether you want to put the carriage bolt through the top or bottom. When placing the assembly onto the bracket, make sure the small rectangular tab of the bracket is sticking up through the slot.



ASSEMBLY

- 3 With everything assembled, take the backing off of the small white LED light and stick it to the bottom of the tab on the top of the license plate bracket in the area shown below. It can go anywhere on the tab but it works best if you place it as far out as possible.



- 4 Once everything is in place, all there is left to do is attach your license plate using the 1/4"-20 X 3/4" button head bolts and 1/4"-20 serr. flange nuts.

ASSEMBLY

- 5** If you are choosing to use our third break light, mount it to the bracket using the 8-32 X 1" button head bolts and 8-32 lock-nuts in the provided holes.

