



# JL FRONT FENDER INSTALLATION INSTRUCTIONS

## TOOLS NEEDED

- 17/32" drill bit
- 5/16" drill bit
- trim remover tool / large flat screwdriver
- 1/8" allen
- 3/16" allen
- 10mm socket
- 8mm socket
- wire cutters
- lighter / heat gun

## HARDWARE

- 5/16-18 x 3/4" Button Head qty. 24
- 5/16-18 x 1" Button Head qty. 8
- 5/16-18 Clip Nut qty. 8
- 5/16-18 Nutsert qty. 6
- 5/16-18 Flange Nut qty. 18
- 10-24 x 1/2" Button Head qty. 8
- 10-24 Flange Nut qty. 8
- 8-32 x 1" Button Head qty. 4
- 8-32 Nylon Insert Lock Nut qty. 4
- Nutsert Tool qty. 1
- Antiseize qty. 1

**Please read the mounting instructions below  
carefully before attempting to install.**

Thank you for purchasing your new front fenders from JcR Offroad!  
Checkout our website, [www.jcroffroad.com](http://www.jcroffroad.com) for other great off-road products. Be sure to rate and review our product online. If you have any questions or are missing parts, please don't hesitate to call us at 269-353-1184!

- 1** Remove the stock fender and the inner fender. Start by removing the 2 8mm bolts and the 2 10mm bolts. Remove the 4 clips holding the inner fender in place with a dash tool.



- 2** Disconnect the clips holding the inner fender onto the fender by simply pull upward on the edge of the fender, then set the inner fender aside. Remove the 4 bolts on the inside of the fender as well as the plastic retainers that hold the fender to the body of the jeep.



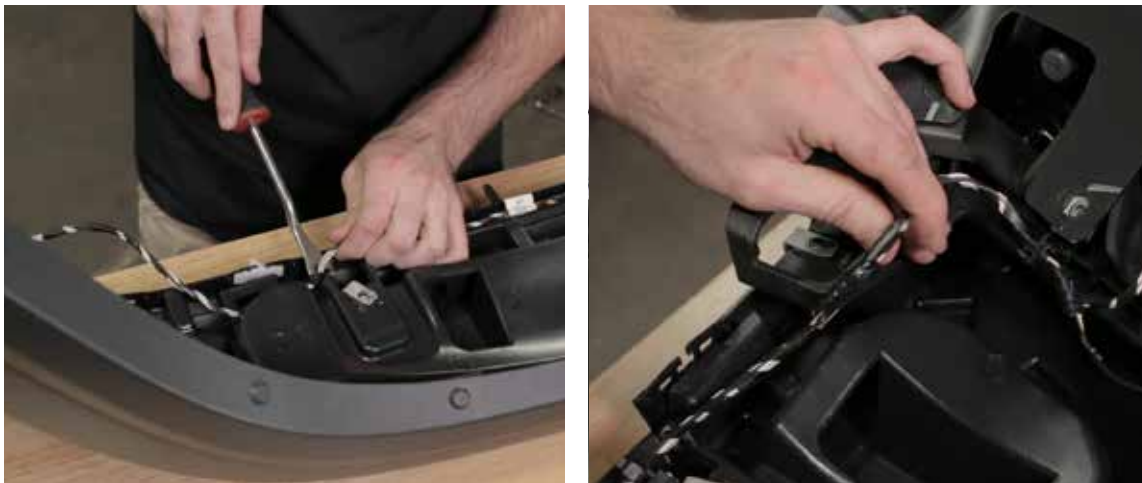
Once you remove the fender, you will need to disconnect the wires. Pull back on the red safety clip then then you can pull the wires apart.



- 3** After you remove the fender, use your dash tool to move any clips that remain. Remove the factory vent panel by squeezing on the clips behind the panel and pry it out. Remove the plastic panel that was connected to the bottom of the fender by simply pulling on it.



- 4** Use your dash tool to remove the clips connected to the fender so you can free the wiring harness. Cut the wire approximately where we did in the picture below.



- 5** Next we will assemble the new fender. Start with mounting the LED light on the LED bracket. Run the 2 wires through the center hole. Use 2 1"-8/32" bolts to mount the light to the bracket. Use a 3/32" allen wrench and a 9mm open end wrench to tighten the bolts. Use 2 1/2"- 10/24" bolts to secure the LED light to the fender with 2 flange nuts. Use a 1/8" allen to tighten the 2 1/2" bolts.



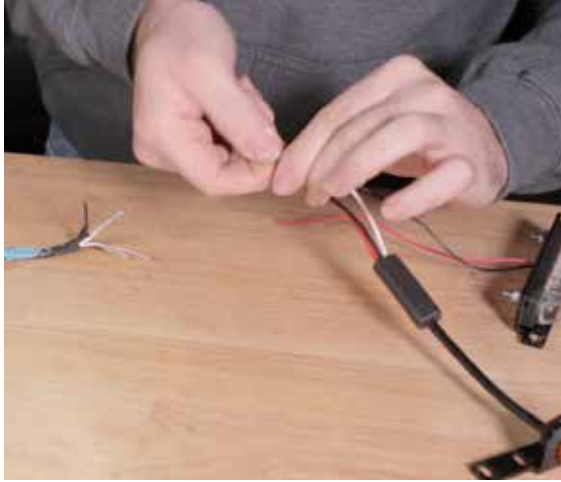
Use 2 1/2"- 10/24" bolts to secure the LED light to the fender with 2 flange nuts. Use a 1/8" allen to tighten the 2 1/2" bolts.



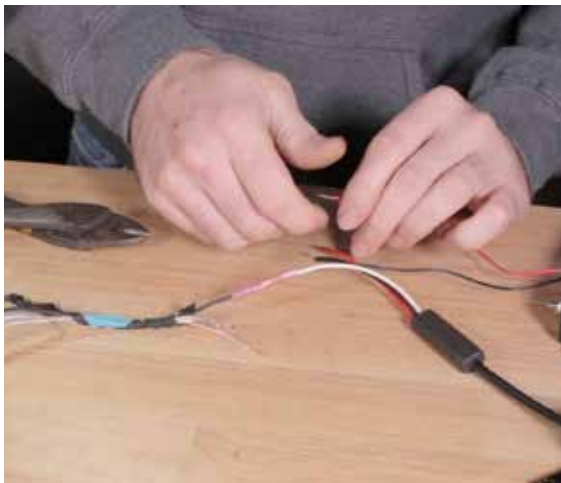
- 6** Mount the 3/4" LED light. Make sure the mount bracket loop faces the front of the fender. Insert the gromite into the loop then push the LED light through the gromite. Use 1/2"-10/24" bolts to secure the bracket to the fender. Use a 1/8" allen to tighten these bolts.



**7** Next we will wire the fender. Connect the black wire from the running light to the white wire on the 3/4" LED then put a butt connector on. Connect the other end of the butt connector to the black wire coming off the factory harness.



Connect the red wire from the running light to the white wire with the orange tracer coming off the factory harness. Connect the black wire from the daytime running light to the white wire with the brown tracer from the factory harness. Last, connect the red wire from the 3/4" LED to the white wire with the green tracer from the factory harness.



Once you connect all the wires, use a heat gun to secure the wires into the butt connectors. Use electrical tape to keep the wires connected and out of the way.

- 8** Assemble the fender support bracket with the 2 5/16" nut clips. Clip them on as shown in the picture below. Remove the wiring clips inside the inner fender.



Once you remove the wiring clips, open up the bottom hole to a 5/16" with a 5/16" drill bit.



Temporarily install the fender support bracket lining up the 3 holes. Use a 3/16" allen to tighten the bolts.



**9** With the temporary bracket installed, drill out the right hole to a 5/16". Once you drill the hole, you can remove the 2 bolts on the surface of the body so we can install the fender.



**10** We can now install the fender. Start by connecting the wire harness back into the factory plug. Insert a 1"-5/16" bolt into the bracket that has the clip nuts on it to support the fender while you secure the rest of the bolts.



Install the rest of the bolts except for the top 2 holes on the fender. Leave those empty for now so we can install the 2nd bracket later.



**11** Next we will install our second bracket temporarily. Start by putting clip nuts on the 2 big holes on the bracket. Use the 1"-5/16" bolts to secure the bracket to the fender.



With the bracket installed, drill 5/16" holes into the crossmember through the 2 holes of the bracket. Once you drill the 2 holes, remove the bracket and open the holes we just drilled to a 17/32".





**12** After you open the 2 holes up to a  $1\frac{17}{32}$ ", install rivnuts. Check out our video on youtube to learn more about installing rivnuts. After you install the rivnuts, you can reinstall the bracket starting with the rivnuts. Only thread them half way then install the upper bolts using the  $1\frac{1}{16}$ " bolts. Go back and tighten down all of your bolts.



Next, install 2  $\frac{5}{16}$ " bolts into the standoffs coming off the jeep into the upper brackets. Make sure you use the round hole to install these bolts.

